



English



## Inquiry about sightseeing

■ Sakurajima Tourist Information / Sakurajima Concierge Center .....	TEL: 099-293-4333
■ Tourism Exchange Center.....	TEL: 099-298-5111
■ Sakurajima Ferry (Kagoshima City Ship Station).....	TEL: 099-293-2525
■ Kagoshima Chuo Station Tourist Information Center.....	TEL: 099-253-2500
■ Tenmachi Salon.....	TEL: 099-213-9574
■ Kagoshima Sightseeing Guide Station.....	TEL: 099-208-4701
■ General Information Call Center San-San-Call Kagoshima..	TEL: 099-808-3333

## Transportation at Sakurajima

### ◎ Local bus

- Sakurajima Island View Bus
- Kagoshima City Bus #60 (To Sakurajima Hospital / Higashi-Shirahama)
- Kagoshima City Bus #70 (From Higashi-Shirahama to Kurokami-Guchi)  
\*Please take these buses to go to Kurokami Buried Shrine Gate  
Ticket Office of Kagoshima City Bus at the first floor of  
Sakurajima ferry terminal..... TEL: 099-293-4220
- Kagoshima Kotsu (To Sakurajima-guchi / Tarumizu Port)... TEL: 0994-65-2258

### ◎ Sightseeing Taxi (Sakurajima Port)

- Sakurajima Kanko Taxi..... TEL: 099-293-2489

### ◎ Bicycle Rental / Car Rental (Sakurajima Port)

- Sakurajima Car Rental..... TEL: 099-293-2162

## Accommodation of Sakurajima

■ Rainbow Sakurajima Inn.....	TEL: 099-293-2323
■ Sakurajima Hotel.....	TEL: 099-221-2311
■ Sakurajima Seaside Hotel.....	TEL: 099-221-2121

### ① Sakurajima-Kinkowan Geopark (Official Website)

<http://www.sakurajima-kinkowan-geo.jp/en/>

### ② Official Tourism Website of Kagoshima City

<https://www.kagoshima-yokanavi.jp/en>

### ③ Minnano Sakurajima (Sakurajima Sightseeing Portal Website)

<http://www.sakurajima.gr.jp/>

①



②



③



### [Contact]

#### Sakurajima-Kinkowan Geopark Promotion Council Office

(World Cultural Heritage / Geopark Promotion Division)

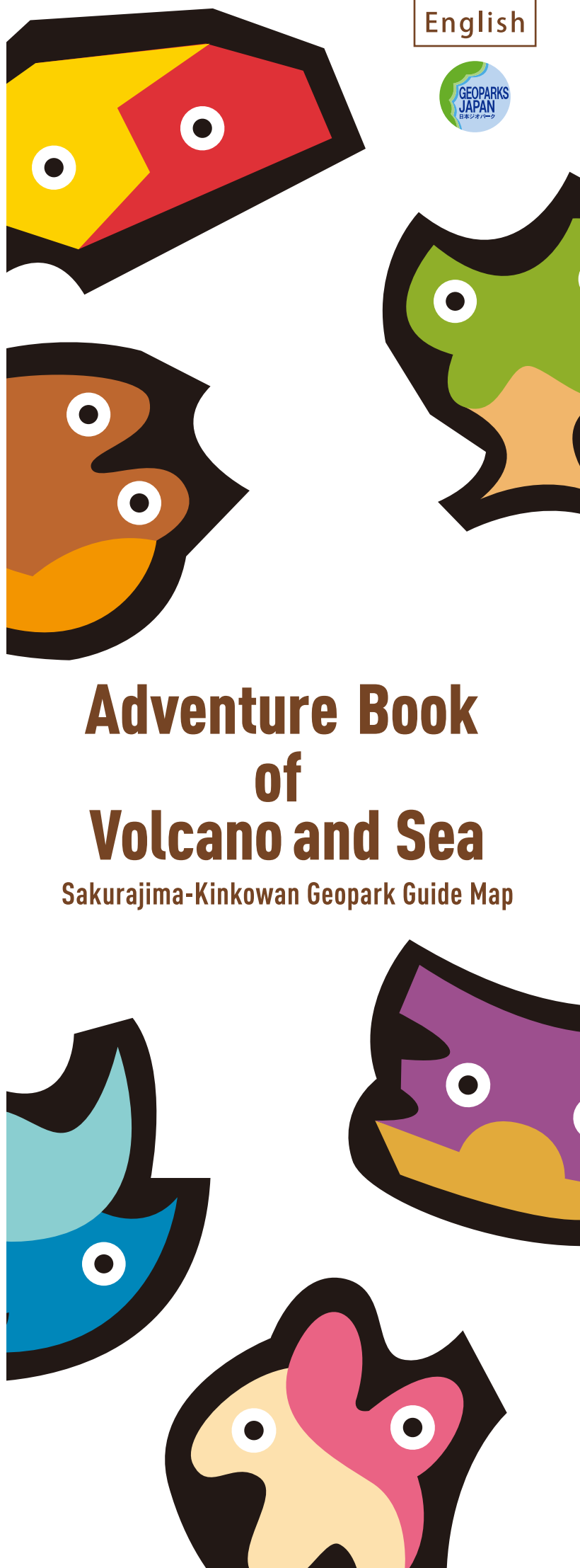
11-1 Yamashita-Cho, Kagoshima City, 892-8677

TEL : 099-216-1313 FAX : 099-216-1320

Made in Oct. 2019

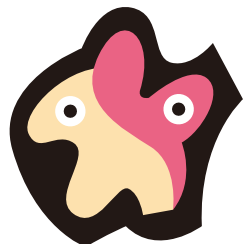
# Adventure Book of Volcano and Sea

## Sakurajima-Kinkowan Geopark Guide Map





People live dealing with the volcanic ash!



## Relationship with the people

People of Kagoshima live besides the active volcano, Sakurajima. The Annei eruption in Edo Period made people move from Kurokami to Uenohara. From Uenohara, they were able to see the beautiful scenery of their hometown, Sakurajima.

Also, the disaster heritage Kurokami Buried Shrine Gate, 2m of the gate was buried by the ash in a single day, has been kept as it was to remind the residents of the disaster. The gate is now located inside Kurokami junior high school. While Sakurajima has been very active over 50 years, people in Kagoshima have lived coping with the ash, applying their knowledge and experience well into their life.

## Kagoshima's high quality service!



People have accepted a life with volcanic ash, and have found a way of coexisting with it. For example, the road sweepers clean volcanic ash on the streets; the public storage collects volcanic ash after cleaning up; the weather forecast tells the direction of the wind on Sakurajima to let people know which area is going to have an ash fall; and the eruption alert mailing system is available as well.

This yellow plastic bag is for collecting volcanic ash.

## Events

- Sakurajima Radish Competition (late Jan. to early Feb.)
- Kagoshima Marathon (early March)
- Sakurajima Hinoshima Island Festival (late Jul.)
- Summer Night Cruise Sakurajima (Aug.)
- Sakurajima Kinko-Bay Long-Distance Swimming Tournament (Jul. to Aug.)
- Kagoshima Kinko-bay Summer Night Fireworks (late Aug.)
- Running Sakurajima Event (early Dec.)



For more information, contact San San Call Kagoshima TEL 099-808-3333

## Fun Experience Programs Same-day reservation possible

※Please make a contact about the hours and fees.As of Oct.2019

### Volcanic Ash Art Experience

Enjoy colorful art made with volcanic ash from Sakurajima.Take a moment in Sakurajima to make unique memories and purchase an authentic souvenir.



- Open year-round / 9:30 ~ 15:00
- Time required / Approx. 20 minutes
- Capacity / 1 ~ 80 people
- Fee / from 1,650 yen
- Inquiries / Ogaku pottery 099-293-3939
- ※Art is available to purchase and take home



### Lava Mini-Trek (30 mins)

A simple, 30-minute walking course of lava that came from a major eruption. If you walk with a guide you will be able to hear the pulsation of Sakurajima.

- Date: This is a program limited to major consecutive holidays, summer vacation etc. ● Duration: About 30 mins
- Location: Sakurajima Visitor Center ● Capacity: 10 people
- Fee: High school and above 1,000 yen, elementary and junior high 500 yen, babies free. ● Contact: Sakurajima Geosaruku TEL 080-4873-7574

### Footbath Making Activity

There are rich hot springs in the active volcano, Sakurajima. You can enjoy making your own footbath by digging sand beach.※Availability depends on tide/weather conditions; please confirm at the Sakurajima Visitor Center

- Hours: Everyday (However, it depends on the tide condition.)
- Place: Arimura Coast
- Fee: 1,000 yen ※Guided tour also available (Booking required) 5,500 yen (2 people or more)
- Contact: Sakurajima Visitor Center TEL: 099-293-2443



## Advance Activities

Reservation required

※Please make a contact about the hours and fees.As of Oct.2019

### Making your own pizza oven

Pizza making activity is available. It would be fun for you to build your own pizza oven with lava rock to bake a pizza.You'll knead dough mixing flour with water and camellia oil that is one of the local specialties of Sakurajima.

- Duration: About 3 hours ● Place: Yogan Kakou Center (Lava Manufacture Center) ● Fee: 15,000 yen (For up to 5 people)
- ※Additional 3000 yen per person for 6 people or more
- Reservation: NPO Sakurajima Museum (TEL: 099-245-2550)



### Kayaking Activity

(Please make a reservation two days in advance.)

Let's enjoy active volcano Sakurajima from the sea!

- (Half-day course)
- Date: All year ● Duration: 3 hours (reservation required)
- Place: Various parts of Sakurajima ● Fee: 8,800 yen ~
- Reservations: Kagoshima Kayaks, Mr. Nomoto (TEL: 090-4583-6920)



## Walking Tour Program

Reservation required

※Please make a contact about the hours and fees.As of Oct.2019

### Volcanic Guided Walk (for 60 min)

- Meeting Spot: Sakurajima Visitor Center ● Capacity: 2 to 10 people
- Time: About 60 minutes ● Fee: High school and over 2,200 yen, Elementary/Middle school 1,100 yen, Infants free ● Reservation: NPO Sakurajima Museum (TEL: 099-245-2550)

### Kagoshima Sightseeing Guided Tour Sakurajima Course

- Meeting Spot: Sakurajima Ferry Terminal ● Capacity: 15 people
- Please make a contact if it's a group. ● Time: About 2 hours ● Fee: High school students and above 500 yen / Elementary school student 100yen
- Reservation: Kagoshima Sightseeing Guide Station TEL: 099-208-4701



## Island View Bus Program

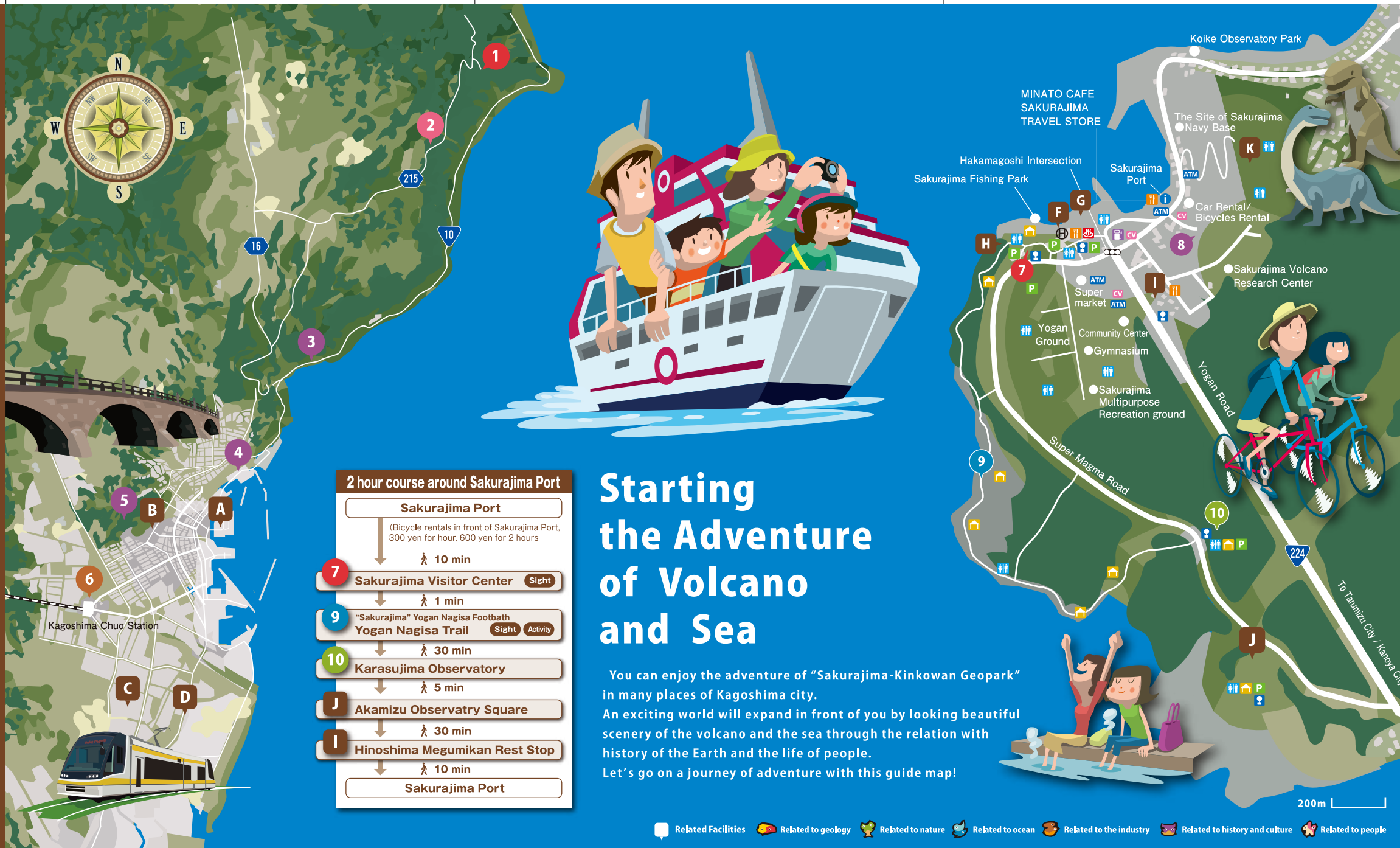
Reservation required

※Please make a contact about the hours and fees.As of Oct.2019

### Island View Bus Geotour

Get on the Sakurajima Island View Bus and take a deep tour of Sakurajima and (Geo Guide).

- Meeting place: Sakurajima Ferry Terminal
- Capacity: 2 to 10 people ● Time: Approximately 2 hours.
- Price: 2,500 yen per person.
- ※It is necessary to bring the "Cute" or Island View Bus Ticket.
- For inquiries, contact the Sakurajima Geosaruku TEL: 080-4873-7574



## Starting the Adventure of Volcano and Sea

You can enjoy the adventure of "Sakurajima-Kinkowan Geopark" in many places of Kagoshima city. An exciting world will expand in front of you by looking beautiful scenery of the volcano and the sea through the relation with history of the Earth and the life of people. Let's go on a journey of adventure with this guide map!

Related Facilities Related to geology Related to nature Related to ocean Related to the industry Related to history and culture Related to people



- From JR Kagoshima Chuo Station
- By City Tram
- Take the City Tram for Kagoshima Station, get off at 'Suizokukan-guchi'..... 5 min walk
- By City View bus / Machi-meguri Bus
- Get off at 'Kagoshima Suizokukan-mae'..... 1 min walk
- By local bus (City bus, Nangoku Kotsu bus, Kagoshima Kotsu bus)
- Get off at 'Suizokukan-mae (Sakurajima Sanbashi)'..... 1 min walk
- By taxi (about 4km)..... about 15 min
- From JR Kagoshima Station
- By walk..... 7 min
- From Kagoshima Airport
- Airport bus..... 50 min
- Get off at 'Kinsei-cho bus stop', To Sakurajima ferry terminal..... 15 min

City Tram Sightseeing information center  
Kagoshima City View bus route

## Convenient common ticket "CUTE"

Discount passport for sightseeing facilities are included.

Fare (a half cost for children)	1-day pass 1,200 yen 2-day pass 1,800 yen
Can be used for	Sakurajima Island View bus, Kagoshima City View bus, local city bus, sightseeing tram, Sakurajima Ferry, Sakurajima Excursion cruise (Yorimichi cruise)
Purchase at	Kagoshima Chuo Station Tourist Information Center, Sakurajima Port / Kagoshima Port, Available to purchase at the Tourism Exchange Center etc

※Invalid for regular sightseeing bus, private bus and ferry

※Please make a contact about the hours and fees.As of Oct. 2019

## Sakurajima Ferry

Service is provided 24 hours a day. During daytime it runs about every 15 minutes.



Please visit the Sakurajima Ferry website for fares and timetable.



Let's Sakurajima from the sea!  
Excursion Cruise (Yorimichi Cruise)  
Fare: Adults 600 yen / Children 300 yen

The service for the 50 min cruise running every day. One cruise per day departing from Kagoshima Port at 11:10

※Please inquire for hours of operation and fares. This information is valid as of Oct. 2019

Contact: Sakurajima Ferry (Shipping Department, Kagoshima City) TEL: 099-293-2525

## Visit Shinjima!

Shinjima is accessible by municipal boat operating between Uranomae Port and Shinjima Port.

- Days of operation: Sundays, Wednesdays, Fridays (service is subject to cancellation depending on weather conditions)
- Departure time: Uranomae Port: 10:05, 11:35, 15:05 Shinjima Port: 10:20, 11:50, 15:20
- Fare: Adults 100 yen, Children 50 yen and Senior citizens (over 70 years old) 30 yen
- Contact: General Affairs Citizens Division, Sakurajima Branch Office TEL: 099-293-2346

The fares listed here are valid as of Oct. 2019.



## 7 Sakurajima Visitor Center

Here you can have an explanation of nature and historical eruption of Sakurajima. Sakurajima Visitor Center is a base facility of Sakurajima-Kinkowan Geopark. Also complete with the Sakurajima Tourist Information and Museum Shop.

- Access: about 10-min walk from Sakurajima Port ■ TEL: 099-293-2443
- Fee: Free ■ Open: Everyday ■ Opening hours: 9:00-17:00 ■ Parking: 10 vehicles



## 8 Tsukiyomi Shrine

The biggest shrine in Sakurajima, which faces to the mountain. It was once buried under Taisho lava, but rebuilt and placed in its current location in 1940.

- Access: about 2-min walk from Sakurajima Port ■ TEL: 099-293-2109
- Parking: 20 vehicles



## 9 Yogan Nagisa Trail

On this trail you can see Taisho lava and its vegetation. The trail to Karasujima Observatory is 3km from 'Sakurajima Yogan Nagisa Park'. ■ Access: about 10-min walk from Sakurajima Port ■ TEL: 099-298-5111 (Tourism Exchange Center) ■ Parking: 20 vehicles ■ Fee: Free ■ Opening hours: Every time



## 10 Karasujima Observatory

Karasujima once located in the sea was buried under Taisho Lava. Since then plants grew naturally on the lava and vegetated island was made. ■ Access: about 25-min walk / 4-min drive from Sakurajima Port ■ TEL: 099-298-5111 (Tourism Exchange Center) ■ Parking: 20 vehicles ■ Fee: Free ■ Opening hours: Every time



## 11 Yunohira Observatory

The highest observation point accessible to the public on Sakurajima (373m above sea level). The view is beautiful. ■ Access: about 15-min drive from Sakurajima Port ■ TEL: 099-221-2019 (Tourism Exchange Center) ■ Fee: Free ■ Opening hours: 9:30-17:00 ■ Parking: 30 vehicles



## E Sakurajima International Volcanic Sabo Center

Here you can learn about landslides and Sabo (debris flow control). ■ Access: about 6-min drive from Sakurajima Port ■ Contact: Week days 099-221-2019 (Sakurajima Sabo Branch), Holidays TEL: 099-221-2030 ■ Fee: Free ■ Opening hours: 9:30-17:00 (Please enter before 16:30) ■ Closed: Dec. 29 to Jan. 3 ■ Parking: 20 vehicles



## F Rainbow Sakurajima Inn, Magma Onsen

There are attractions such as brown colored hot spring wells as deep as 1,000m and dishes cooked with the local ingredients. ■ Access: about 8-min walk from Sakurajima Port ■ TEL: 099-293-2322 ■ Fee: Adult 390yen / Child 150yen ■ Opening hours of Magma Hot Spring: 10:00-22:00 (Wednesdays 13:00-22:00) ■ Opening hours of Rainbow Sakurajima Inn: Check in 15:00 / Check out 10:00 ■ Open: Everyday ■ Parking: 60 vehicles



## G Rainbow Beach

Artificial beach next to Rainbow Sakurajima Inn. Children can enjoy swimming at the calm sea. ■ Access: about 8-min walk from Sakurajima Port ■ TEL: 099-298-5111 (Tourism Exchange Center) ■ Opening hours: 10:00-18:00 (the beach opens from middle of Jul. to end of Aug.) ■ Parking: Available



## H 'Sakurajima' Yogan Nagisa Park Footbath

With a length of approximately 100m, it is a Japan's longest foot bath. You can enjoy bathing your feet in the natural hot spring water while taking in the views of Sakurajima and Kagoshima City. No charge. ■ Access: about 8-min walk from Sakurajima Port ■ TEL: 099-298-5111 (Tourism Exchange Center) ■ Opening hours: 9:00-Sunset ■ Open: Every Time ■ Parking: 100 vehicles (including a parking area around the foot spa)



## I Hinoshima Megumikan Rest Stop

Here you can get a wide variety of Sakurajima souvenirs. There are many products made of local vegetables and specialties. You can also eat local dishes. ■ Access: about 5-min walk from Sakurajima Port ■ TEL: 099-245-2011 ■ Opening hours: 9:00-18:00 ■ Restaurant Opening hours: 10:00-16:00 ■ Closed: 3rd Mondays (Following weekdays if it's a national holiday) ■ Parking: 87 vehicles



## J Akamizu Observatory Square

You can enjoy a great view of Taisho lava and Kinko-Bay below. There is also a memorial monument of the 'Sakurajima all-night concert'. ■ Access: about 4-min drive from Sakurajima Port ■ TEL: 099-298-5111 (Tourism Exchange Center) ■ Opening hours: 8:30-17:00 ■ Open: Every time ■ Parking: 20 vehicles



## K Sakurajima Dinosaur Park

There are seven huge dinosaur statues here, which are very popular among children. There is also 50m-long slide. ■ Access: about 9-min walk / 2 min drive from Sakurajima Port ■ Fee: Free ■ Parking: 77 vehicles



※Please make a contact about the hours and fees.As of Oct.2019



## 12 Farm of Sakurajima small mandarin

The small and sweet 'Sakurajima small mandarin' is unique to the environment of Sakurajima and its volcanic alluvial fan made by the debris flood. These characteristic mandarins are able to grow thanks to the good drainage brought about by the environment and landscape. Harvest time: Dec. to Jan.

## 13 Farm of Sakurajima radish

Sakurajima Radish is listed in the Guinness Book of World Records as the heaviest radish in the world. It grows in the farms that use soil mixed with volcanic stones. Harvest time: Jan. to Feb.

## 14 Tagiri (Volcanic hydrothermal activity)

Local fishers call volcanic hydrothermal activity tagiri which means 'to boil' in Japanese. The area is unique because we are able to see volcanic gases rise up from the bottom of the sea to the surface. It is also the place where the rare creature named Satsuaorimushi live.

## 15 Shinjima

This island elevated from the bottom of the sea through Annei Eruption in Edo era. The surrounding islands were formed by lava that elevated to the surface. There are layers of fossil shells of around 5,000 years ago.

## 16 Kurokami Viewing Spot

The observatory of Showa Lava area. Kurokami Viewing Spot, is the best location to observe the Showa Lava and the Showa Crater. You may also see Saba facilities.

■ Access: about 30-min drive from Sakurajima Port ■ No parking

## 17 Kurokami Buried Shrine Gate

Here you can see the shrine gate buried 2m in depth by Taisho Eruption. You will see the Shinto shrine after you enter the gate. The surrounding forest is the oldest forest in Sakurajima. You may also see the unique chinquapin trees that revived after they were buried by the eruption.

## 18 Sakurajima-guchi

The spot that connects Sakurajima to the mainland. The former island was connected because of the Taisho Lava. You may recognize the different vegetation between Osumi peninsula and the area of lava. In the Edo era, the first western battleship in Japan was built in here. Seto village, now buried by lava.

■ Access: about 20-min drive from Sakurajima Port ■ Parking: Available

## 19 Arimura Lava Observatory

Here you can see Taisho Lava and Showa Lava at the same time. The different types of vegetation in each lava is also worth seeing. You can get an unbroken view of Kinko Bay from the promenade approximately 1km in length.

■ Access: about 20-min drive from Sakurajima Port ■ TEL: 099-298-5111 (Tourism Exchange Center) ■ Parking: 19 vehicles

## 20 Higashisakurajima elementary school / Sakurajima eruption monument

Here you can read writing about the Taisho Eruption such as warning signs of eruption and the descriptions of the disaster. There are also instructions on necessary preparations for an eruption. The phrase 'Residents must not believe what the scientific theory says' is famous among people in Sakurajima. Therefore, the monument is also called the 'science failure monument'.

■ Access: about 10-min drive from Sakurajima Port ■ No Parking

## L Furusato Onsen Resort

A hot spring in the Southern part of Sakurajima facing Kinko-Bay. You can enjoy the great view while taking a bath in the hot spring.

■ Access: about 15-min drive from Sakurajima Port  
■ Fee: ■ Opening hours: Please contact to the facilities below:  
Sakurajima Seaside Hotel (TEL: 099-221-2121)  
Sakurajima Hotel (TEL: 099-221-2111)

## M Fumiko Hayashi Literary Monument

Fumiko Hayashi is a female novelist who is known for 'Horoki' and 'Ukigumo'. Her mother is from Sakurajima; the monument was built in the place where Fumiko was legally domiciled.

■ Access: about 15-min drive from Sakurajima Port ■ TEL: 099-298-5111 (Tourism Exchange Center)

## N Sakurajima Shirahama Onsen Center

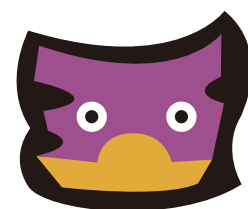
A popular hot spring at the bottom of Sakurajima North Peak. It has saunas and outside-baths. The source of this popular hot spring wells up from 1,000m underground.

■ Access: about 12-min drive from Sakurajima Port ■ TEL: 099-293-4126  
■ Fee: Adult 390yen / Child 150yen ■ Opening hours: 10:00-21:00  
■ Closed: every 10th (The following weekdays if it's Saturday, Sunday, or national holidays) ■ Parking: 54 vehicles

※Please make a contact about the hours and fees As of Oct.2019



People lived alongside of volcano from Jomon Period! (\*1)



## Relationship with history and culture

The history of Kagoshima cannot be described without the volcano. The remains of the shell mound in Sakurajima is proof that people have been living with the volcano since the Jomon period of Japan. There is a trace of a debris flow as well. However people have continued to live on Sakurajima as the blessing outweighs the disaster. Also, the stone culture of Kagoshima owes to the volcano. Welded tuff, a volcanic ejecta, is softer than other stones, thus it is easy to process. Many historical buildings such as the machine shop of Shuseikan(\*2) and the stone bridge are made of welded tuff.

## The Castle of Satsuma is Shirasu Tableland!



Kagoshima Castle where the Feudal Lord Shimazu Family lived consisted of Shirasu-base and so did Ueyama Castle (Shiroyama) and the residents at the bottom of it.

(\*1) the time in Japanese prehistory; dated between ca. 10,500 to ca. 300 B.C.  
(\*2) the industrial complex Shimadzu Nariakira, the lord of Satsuma Clan, was created to promote modernization, and industrialization projects during 19th century.

## Access to Kurokami Buried Shrine Gate

### Local bus

- You cannot go to Kurokami Buried Shrine Gate by Sakurajima Island View Bus.
- A One-day Pass is reasonable and convenient for the routes below.
- (Route 1) Transfer at 'Higashi Shirahama'
- 1. Take Kagoshima city bus #60 From 'Sakurajima Port' to 'Higashi Shirahama' (about 20 min)
- 2. At Higashi Shirahama Take Kagoshima city bus #70 From 'Higashi Shirahama' to 'Kurokami chugakko mae' (about 20 min)
- (Route 2) Direct
- Take Kagoshima city bus #60 From 'Sakurajima Port' to 'Kurokami Chugakko mae' (about 35 min)

### Car or taxi

About 20km from Sakurajima Port (about 30 min)

36 km/around Sakurajima

- about 1 hour by car
- about 4 hours by bicycle
- about 9 hours by walk





Authorized as a Japanese National Geopark



1

## The volcano and people are coexisting!

How amazing that 600,000 people live alongside the active Sakurajima volcano that actively erupts on a daily basis. Disaster prevention measures are taken using the world's best high-tech volcanic monitoring system. This allows people to live near the active volcano in safety. Kagoshima is a unique place where an active volcano and an urban city coexist.

2

## The sea made by the volcano!

Kinko-bay spreading out in front of Sakurajima was actually made by the volcano. About 30,000 years ago, a large amount of magma was released after a huge eruption occurred in the inner side of Kinko-Bay. This caused the land to become empty and dented. The dented area is called Aira Caldera. 200m-deep Kinko-bay was formed after the seawater entered in it.

3

## The eruption of Sakurajima

The history of Sakurajima is called the history of eruptions. There have been 17 huge eruptions up until today. The history of Sakurajima's volcanic activity can be divided into 2 periods. From the time Sakurajima was born until 5,000 years ago, the North Peak was active. Since 4,500 years ago, the South Peak has been active ever since. As the two volcanoes; the North Peak and the South Peak line in a row, Sakurajima looks wide.

The biggest eruption in the history of Sakurajima occurred about 13,000 years ago. The eruption covered Kagoshima city with ash as deep as 1m and the whole of Kagoshima prefecture was covered with at least 10cm of ash. Another huge eruption that changed the shape of Sakurajima occurred in 1914. The lava flow connected the former Sakuajima island to Osumi peninsula during the eruption. Kurokami Buried Shrine Gate and Karasujima Observatory tell us how huge the eruption was.

Full of woders  
in the deep sea made by  
the volcano!



## Relationship with the sea

Kinko-Bay is full of woders, because it's made by a volcano! The 200m-deep sea is a dented area which was made by the huge eruption occurred 1 million years ago. There is a small submarine caldera called Wakamiko Caldera in the inner side of Kinko-Bay which erupts volcanic gas underground. The volcanic gas floating on the surface of the sea called Tagiri (which means 'to boil' in Japanese) shows the existance of a submarine caldera.

Also, there are dolphins, about 1,000 species of fish and rare creatures such as Satsumahaorimushi in Kinko-bay. The injection holes of hot water and rare metals are also found in the bottom of the sea.

### Dolphins of Kinko-Bay are greedy!?



Despite their cute faces, dolphins need a lot of food every day. Kinko-Bay is rich enough to feed those dolphins.



Running for 24 hours with its safety

**Sakurajima Ferry**

Kagoshima Port ⇄ Sakurajima Port  
(about 15 min)

Contact

Kagoshima City Ship Department Operations  
Division 099 (293) 2525  
61-4 Yokoyama-Cho, Kagoshima city, 891-1419  
<http://www.city.kagoshima.lg.jp/sakurajima-ferry/>

### Meet the whale shark! Kagoshima City Aquarium

3-1 Honkoshinmachi, Kagoshima City  
TEL: 099-226-2233 [Opening hours]  
9:30-18:00 (Please enter before 17:00)  
[Closed] 4 days following the 1st Monday  
of December [Admission fee] Adults (high  
school students and above): 1,500 yen  
Elementary and junior high school students  
750 yen, Children over 4 years old 350 yen



Dolphin  
waterway



## Relation with the landscape and geology

About 29,000 years ago in Kagoshima, there was a huge eruption that was a million times bigger than the eruptions we currently see at Sakurajima. Kagoshima was covered with magma flow that was as thick as 60m. The large amount of magma that jetted out caused the land to sink created Aira Caldera. Kagoshima was covered with a mixture of volcanic stone, ash and gas that were combined under a heat of 600 degrees, a phenomenon called pyroclastic flow. This covered the mountains and valleys of Kagoshima, making it into flat land within a week. Shirasu tableland was later created through the rivers that carved out the land.

Sakurajima's first volcanic activity started 26,000 years ago in the southern part of the caldera. Repeated eruptions formed the North Peak; the first volcanic body and South peak; the second volcanic body of Sakurajima, shifting the position of the crater. Shirasu tableland where you stand today, Sakurajima and Kinko-Bay were all created by the huge eruption that took place many years ago.

### Kinko-Bay used to be a caldera!



Kinko-Bay is a landscape created from the land that was dented through the huge repeated eruptions that took place thousands of years ago. Volcanoes are not only mountains but also take the form of a dented volcano, known as caldera.

### Trivia

#### 1 The spot to experience the power of the volcano!

Looking down the Aira Caldera from the Terayama-park observatory spot, you will notice a huge dented area at the far end of Kinko-Bay. This is the caldera. Experience the great power of the volcano while having a great view of Sakurajima!



#### 2 Check the surface of mountain!

The surface of Kita-Dake is rough compared to that of Minami-Dake. The Showa Crater located in the eastern steep of Minami-Dake is covered by volcanic products from new eruptions, so its surface is very smooth.



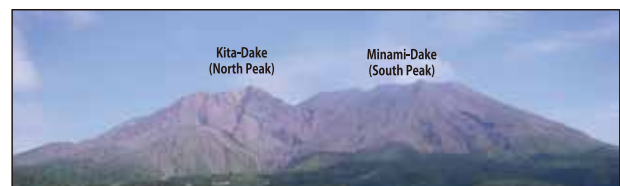
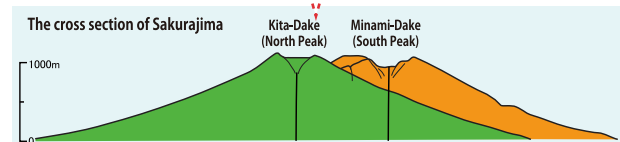
The ground of Kagoshima was made by a huge eruption!

Shirasu tableland is not Sakurajima's volcanic ash!



It is often mistaken that Shirasu tableland is made up of ash from Sakurajima millions of years ago. However, Shirasu tableland was actually created by Aira Caldera's huge eruption only in a week.

Sakurajima is made of 2 volcanos!



Although Sakurajima looks like one mountain, it is actually consisted of two volcanoes, Kita-Dake and Minami-Dake! Kita-Dake was active from the birth of Sakurajima which is about 26,000 years ago until about 5,000 years ago. Later on, the crater moved to the South, and its volcanic activity started about 4,500 years ago and still continues today. These two mountains that range from north to south make up Sakurajima. This is why Sakurajima looks wide from Kagoshima city.



**Small museum of the volcano!**  
When you come to Sakurajima, please come here at first!

**Sakurajima Visitor Center**  
Open 365 days a year, 9:00-17:00  
Contact 099-293-2443

You will be interested in the science more.  
You will like Kagoshima more.

**Kagoshima Municipal Science Hall**

[Opening hours] 9:30-18:00 (Please enter until 17:30)  
[Closed] Every Tuesdays (Following weekdays if it's a national holiday), Dec. 29 to Jan. 1 [Fee] High school students and above: 400 yen / Elementary and junior high school students: 150 yen [Address] 2-31-18 Kamoike, Kagoshima City [Phone] 099-250-8511





Look at the vitality of plant species! Sakurajima is a natural museum!



## Relationship with nature

Plant species cannot live under severe volcanic environment? No, there are Japanese pampas grass and Japanese knotweed near the crater and they are strong against volcanic gases. A little further from the crater, there are Eurya Japonica and Alnus firma. In the area the furthest from the crater, Machilus thunbergii and Japanese black pine can be seen.

The plants on the ground are covered with lava flow and the ground is filled with rocks by each eruption, but plants grow back every time. At first, Mosses and Lichenes start to grow, and then a meadow will be formed. Intolerant trees such as Japanese black pine trees follow. Then, shade trees such as Muchilus thunbergii will come out. In this way, the volcanic ground becomes a forest over many years. Sakurajima is a natural museum because you can observe the change of vegetation on the variety of lava made in different eras.

### Plant species are alive even near the crater!



There are few plants on new lava such as Showa Lava and Taisho Lava, and a rich forest can be seen on old lava such as Annei Lava and Bunmei Lava.

### Trivia

#### Watching plant species of three generations!

Arimura beach has lava of 3 different eras; Annei(1779), Taisho(1914) and Showa (1946). Find out the difference between the old lava covered by trees and the new lava partially covered with Japanese black pine on the volcanic rocks!



## SAKURAJIMA - KINKOWAN GEO PARK

Geopark is a "park of the Earth". The earth is like a big park where you can enjoy the stories of relationship between the Earth and human beings from the past to the future! Including mountains, oceans and forests, there are many natural attractions that have been created over millions of years.

There are many ways to enjoy Sakurajima-Kinkowan Geopark. You can enjoy the incredible scenery, tours, events, activities, and local products. Let's discover the wonders of Sakurajima and Kinko-Bay!

Don't miss it!  
"Sakurajima-Kinkowan Geopark"  
- The relationship between the volcano and people -



## SAKURAJIMA - KINKOWAN GEO PARK

### Life on Kagoshima 4

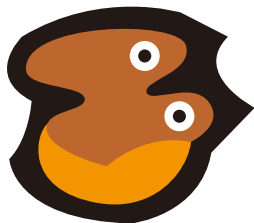
The residents of Kagoshima do not care about the small eruptions. They are used to the eruptions because Sakurajima erupts over hundreds of times each year. Since the people of Kagoshima have coexisted with the volcano for many years, disaster prevention measures are well organized.

You may find the residents' knowledge to coexist with the volcano by observing their daily lives. For example, there are yellow Kokuhei Bukuro bags for collecting volcanic ash in Kagoshima. Also, students in Sakurajima wear helmets to protect their heads from volcanic debris.

### 5 You can experience Sakurajima and Kinko-Bay!

Sakurajima-Kinkowan Geopark has many Geo-Sites where you can play and learn about the land and its long volcanic history. Find out how the people have lived with the volcano by learning about the products and historical sites of the land related to the volcano. You can also enjoy exciting activities, tours, unique products and local meals. Where would you like to begin?

## Blessing of the volcano and the sea!



## Relationship with industry

There are many treasures utilizing the blessing of the volcano and the sea in Sakurajima. For example, Sakurajima small mandarins grow on the sunny slope utilizing the good drainage of the volcanic geology and the sunshine reflected by Kinko-Bay.

There are also pottery using volcanic ash, ash-dried fish, glass work and cosmetics using Shirasu, and grilled meat plates made by lava. The hot springs are absolutely a blessing of the volcano. Kagoshima has the most hot springs among the capital cities in Japan. The people in Kagoshima are strong enough to make good use of the "disliked" volcanic ash in the industry.

## Changing 'disliked' ash into industry!



Shirasu material, a kind of volcanic ejecta, is used as the vegetation base of Kagoshima City Tram.

## View Spots

The sunset and Sakurajima Ferry



The night view from Yunohira Observatory



## Sakurajima Island View

※Please make a contact about the hours and fees. As of Oct. 2019

The Sakurajima Island View Bus does a 60 minute round trip around the western sight-seeing areas, including Sakurajima Ferry Terminal and Yunohira Observatory. It is possible to efficiently travel around Sakurajima's main tourist spots in a short period of time.

One-day pass is available in the bus.

**Fare** (depends on the distance) ..... Adults **120-440 yen** Children: **60-220 yen**

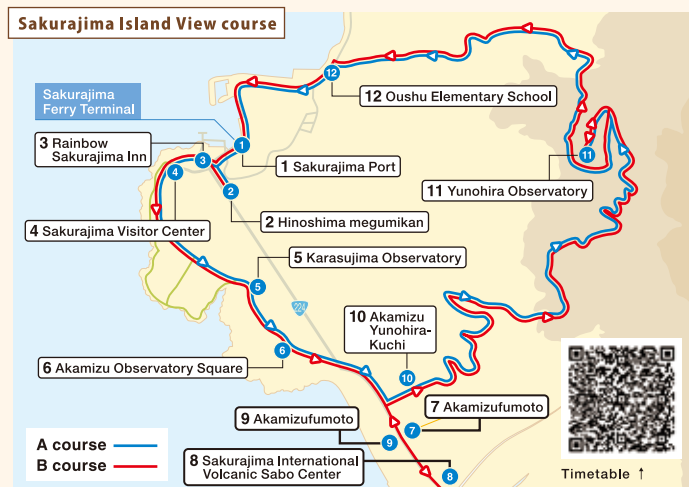
**One-day pass** (all day use) ..... Adults **500 yen** Children: **250 yen**

A one day ticket is recommended for people using a bus for sightseeing

**Number of ships** ..... ●A Course: **7 ships** ●B Course: **8 ships**

**Operation interval** ..... **30 minute interval** First departure from Sakurajima Port at 9:30am, last boat at 16:30

Departure from "A Course" every hour, and "B Course" route at half past every hour



Contact about Sakurajima Island View Bus

■Kagoshima City Transportation Operations Section 099-257-2117  
■Kagoshima City Transportation Sakurajima Office 099-293-4220

## Sakurajima Regular Sightseeing Bus

Course	Dept. place	Start	Route [Sightseeing stops]	End	Time	Fare
Sakurajima Nature Sightseeing Course	Kagoshima Chuo Station East-8	8:55 (Sakurajima Port Dept. 9:40)	Kagoshima Chuo Sta.→Napol-dori St.→Waterfront→[Sakurajima Ferry]→Sakurajima Port→[Yunohira Observatory]→Fujino Ako grove→[Kurokami Buried Shrine Gate]→[Tabino Sato]→[Arimura Lava Observatory]→Fumiko Hayashi Literary Monument→Sakurajima Port→[Sakurajima Ferry]→Sakurajima Port, Kinseicho, Tenmonkan(Passengers can get off)→Kagoshima Chuo Sta.	12:35 (Sakurajima Port Ar. 11:50)	3h 40min	Adults 2,300yen
		13:40 (Sakurajima Port Dept. 14:30)		17:20 (Sakurajima Port Ar. 16:40)	2h 10min	Children 1,200yen

Contact From Sakurajima Port Adults 1,800yen Children 850yen

■Kagoshima Chuo Station Tourists Information Center 099-253-2500  
■Kagoshima City Transportation Operation Section 099-257-2111

Course	Dept. place	Start	Route [Sightseeing stops]	End	Time	Fare
Kagoshima City / Sakurajima Tour	Kagoshima Chuo Station East-9	8:50	Kagoshima Chuo Sta.→Terukuni Shrine→Statue of Takamori Saigo→[Shiroyama Observatory]→Saigo Cave→Sakurajima Port (Sakurajima Ferry)→Kurokami Buried Shrine Gate→Taisyo Lava→[Arimura Observatory]→[Yunohira Observatory]→Sakurajima Port (Sakurajima Ferry)→[Sengan-en](lunch, souvenir, walking in the garden)→[Museum of Meiji Restoration]→Kagoshima Chuo Sta.	15:25	6h 35min	Adults 4,400yen Children 2,200yen
Kagoshima City / Sakurajima Short Tour	Kagoshima Chuo Station East-8	9:20	Kagoshima Chuo Sta.→Terukuni Shrine→Statue of Takamori Saigo→[Shiroyama Observatory]→Saigo Cave→Sakurajima Port (Sakurajima Ferry)→Sakurajima Port→[Yunohira Observatory]→Sakurajima Port (Sakurajima Ferry)→[Sengan-en]→Kagoshima Chuo Sta.	13:15	3h 55min	Adults 3,050yen Children 1,530yen
		13:30		17:25		

Contact (You can also get on at Kagoshima Sun Royal Hotel (reservation required), Takamibaba, Tenmonkan, Terukuni Shrine, and Shiroyama Hotel Kagoshima mae)

■Kagoshima Chuo Station Tourists Information Center 099-253-2500 ■JR Kyushu Bus 099-247-5244





## 1 Terayama Park

At the park you can see the great view of Sakurajima and Aira Caldera (the inner part of Kinko-Bay). You will also see a volcanic alluvial fan on the northwest slope of Sakurajima.

■ Access : about 35 min by car from Kagoshima Chuo Station  
■ TEL : 099-216-1366 ■ Parking : 10 vehicles



## 2 Haragosha Shrine

This is a shrine in Uenohara (Yoshino-cho) made by the people of Kurokami Village when they settled there after the Annei Eruption. It is said that they transferred the god of Kurokami Shrine to Haragosha Shrine. The suffering of the people at that time is described in the stone monument.

■ Access : about 30 min by car from Kagoshima Chuo Station ■ No Parking



## 3 Sengan-en

The Japanese garden of the Shimazu family villa; a garden that makes use of Sakurajima and Kinko Bay in the landscape. The reverberation furnace here utilizes volcanic materials. It has cultural properties that are a part of the World Heritage 'Sites of Japan's Meiji Industrial Revolution'.

■ Get off Kagoshima Cit View Bus at 'Sengan-en-mae (Iso Teien Mae)' stop. ■ TEL : 099-247-1551 ■ Fee : Adults 1,000 yen / Children 500 yen ■ Open : Everyday  
■ Opening hours : 8:30-17:30 ■ Parking : 500 vehicles (300 yen for a car)



## 4 Ishibashi Memorial Park

This park was founded as a memorial to the 3 bridges (part of the initial 5 stone bridges of the Kotsuki River) that survived water damage and were relocated and reconstructed at the end of the Edo period. The stone bridges are partially made from volcanic materials.

■ Access : Get off Kagoshima Cit View Bus at 'Ishibashi Kinen Koen Mae' stop. ■ TEL : 099-248-6661 ■ Fee : Free ■ Closed : Every Monday (The Following weekday if it's a public holiday), and Dec.31. ■ Parking : Available



## 5 Shiroyama

An ideal spot for viewing Sakurajima and the business district of Kagoshima City. A castle made from Shirasu-Daichi (a pyroclastic plateau in Kyushu, rarely found even in Japan) was built here.

■ Access : Get off Kagoshima City View Bus at 'Shiroyama' stop  
■ TEL : 099-298-5111 (Tourism Exchange Center) ■ Parking : 42 vehicles



## 6 Greening the track way of the city tram

Lawn is laid under the tracks of the city tram to vegetate the land and to defuse the heat island phenomenon (total extension is 8.9km). The blocks made of Shirasu are used as the base for growing lawn. We can see how people in Kagoshima utilize the materials from the volcanic eruptions.

■ Place : The city tram between Kagoshima Station to Namida-bashi Station



## A Kagoshima City Aquarium

You can see a whale shark and rays enjoying swimming in the aquatic tank. It is definitely worth seeing. There are also exhibitions of rare creatures such as Satsumahaorimushi.

■ Access : Get off Kagoshima Cit View Bus at 'Kagoshima-Suizokukan Mae' stop. ■ TEL : 099-226-2233 ■ Opening hours : 9:30-18:00 (Please enter before 17:00) ■ Closed : first Monday in Dec. and the following 4 days ■ Parking : 500 vehicles (free for 1 hour, 200 yen is added every hour after that)



## B Kagoshima Prefectural Museum

There are lots of exhibitions related to the nature of Kagoshima, such as Sakurajima and Kinko-Bay.

■ Access : Get off Kagoshima Cit View Bus at 'Saigo-Dojo-Mae' stop. ■ TEL : 099-223-6050 ■ Fee : Free ■ Opening hours : 9:00-17:00 (Please enter before 16:30) ■ Closed : Mondays (The following weekdays if it's a public holiday), every 25th (The 4th Tuesday if it's Saturday or Sunday), and Dec. 29 to Jan.1. ■ No Parking



## C The Kagoshima University Museum

Academic resources stored in Kagoshima University are exhibited. There are many geoscience samples such as the stratum of 'Satsuma Tephra', fossils and minerals found in Kagoshima.

■ Access : 5-min walk from 'Toso' Station of Kagoshima City Tram ■ TEL : 099-285-7259 ■ Fee : Free ■ Opening hours : 10:00-17:00 (Please enter before 16:30) ■ Closed : Sun, Mon, public holidays and the New Year period.



## D Kagoshima Municipal Science Hall

It's enjoyable for both children and adults. There are also exhibitions of Sakurajima.

■ Access : about 10-min walk from 'Kamoike Dentei' or 'Korimoto Dentei' of Kagoshima City Tram ■ TEL : 099-250-8511 ■ Fee : Adults 400 yen / Children 150 yen ■ Opening hours : 10:00-18:00 (Please enter before 17:30) ■ Closed : Tuesdays (The following weekdays if it's a public holiday), Dec. 29 to Jan.1 ■ Parking : 364 vehicles (Free for 3 hours at 'Parking area of Kamoike Park' next to Kagoshima Municipal Science Hall)



## Fun to know! [The rules of Sakurajima]

The people in Kagoshima including Sakurajima are leading a life following these "rules" below. Take a look at these "rules" that will help you enjoy Sakurajima-Kinkowan Geopark safely. Even if you visit Sakurajima for the first time, don't worry. These rules will help you enjoy your time on Sakurajima. The more you know about them, the more you'll have fun!

### [No.1] Don't run away when an eruption occurs.

People can enjoy sightseeing even Sakurajima erupts on a daily basis. Local residents are living at the bottom of Sakurajima which has hundreds of small eruptions every year.

The area within 2km from the crater of Sakurajima is off limits. Tourist spots are all at least 2.5km away from the crater, so you can travel around them without any concern.



### [No.2] Don't be surprised if volcanic ash falls on you.



You won't feel any pain or be injured by the falling ash, because they are tiny particles smaller than 2mm. However, be careful if you wear contact lenses because it hurts when the volcanic ash gets into your eyes. Don't be afraid when the ash gets into your mouth, because research shows that volcanic ash of Sakurajima doesn't affect your health.

### [No.3] Just beat the ash off if you want to keep your clothes clean.

People in Kagoshima beat the volcanic ash off when they have some on their clothes. However, have a break under the roof until the ash stops falling if you care about getting dirty. If you don't mind getting a bit dirty, there's nothing you need to worry about. The ash generally stops falling in 10 to 20 minutes. So if it falls heavily, stay under a roof or get inside a building to wait until it stops ashing.



### [No.4] Don't be panicked when you face 'doka bai'. 'Doka bai' means the huge amount of ash fall in Kagoshima.



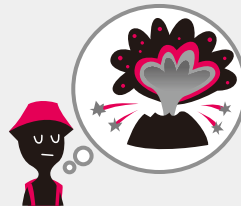
When you are driving and you are caught in heavy ash fall, lower the speed or stop until it stops, just as you do in a heavy rain. As volcanic ash fall in a leeward slope, you can get rid of the ash by avoiding the area depending on the conditions.

### [No.5] Don't be surprised when you see people not wearing masks.

You'd better wear a mask when volcanic ash falls, however it doesn't mean that you can't go out without masks. You may realize that there are few people wearing masks to deal with volcanic ash when you go to the city of Kagoshima.



### [No.6] Don't worry too much about a possible huge eruption.



If an eruption of the same scale as Taisho Eruption is to occur, there will be some visible signs in advance, such as lowering well-water levels and frequent small earthquakes. It's highly unlikely that a sudden huge eruption happens. Even in the case of Taisho Eruption, there were the signs in advance.

### [No.7] If you are still worried, check out the information of Meteorological Agency.

The Meteorological Agency will announce a level 4 eruption warning (prepare for evacuation) or a level 5 eruption warning (evacuate), if the possibility of a major eruption is considered to be high. If you would like to know about the condition of Sakurajima, please inquire of the Meteorological Agency or visit the website.



<http://www.data.jma.go.jp/svd/vois/data/tokyo/keikailevel.html>