

Amami Oshima Island

Access

Q1. Where do you want to depart from?

From Kagoshima

From Fukuoka

From Osaka

From Tokyo

From Osaka

You can reach Amami Oshima Island by direct flight from Osaka, or by Shinkansen bullet train or express bus to Kagoshima and then transferring to a ferry.

Notice

The ferry terminals in Kagoshima are more than 1 hour's travel away from Kagoshima Airport. Please plan your travels accordingly.



Q2. How would you like to travel?

*You may use your JR pass for Shinkansen bullet trains.

*Journeys by sea are more subject to weather conditions than flights.

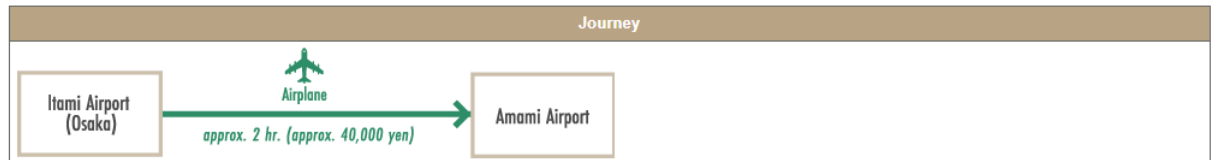
☺ Cheaply

Please note, fares are a rough approximation.

🕒 Quickly

Airline tickets are normal rates. Rates may change depending on the season, so please check the website for appropriate rates.

🕒 Quickly



*Jetstar also operates a direct flight from Narita Airport to Kagoshima Airport.



Make a reservation

Japan Air Commuter (JAL)
(tel: 0570-025-071)

Q2.How would you like to travel?

*You may use your JR pass for Shinkansen bullet trains.
*Journeys by sea are more subject to weather conditions than flights.

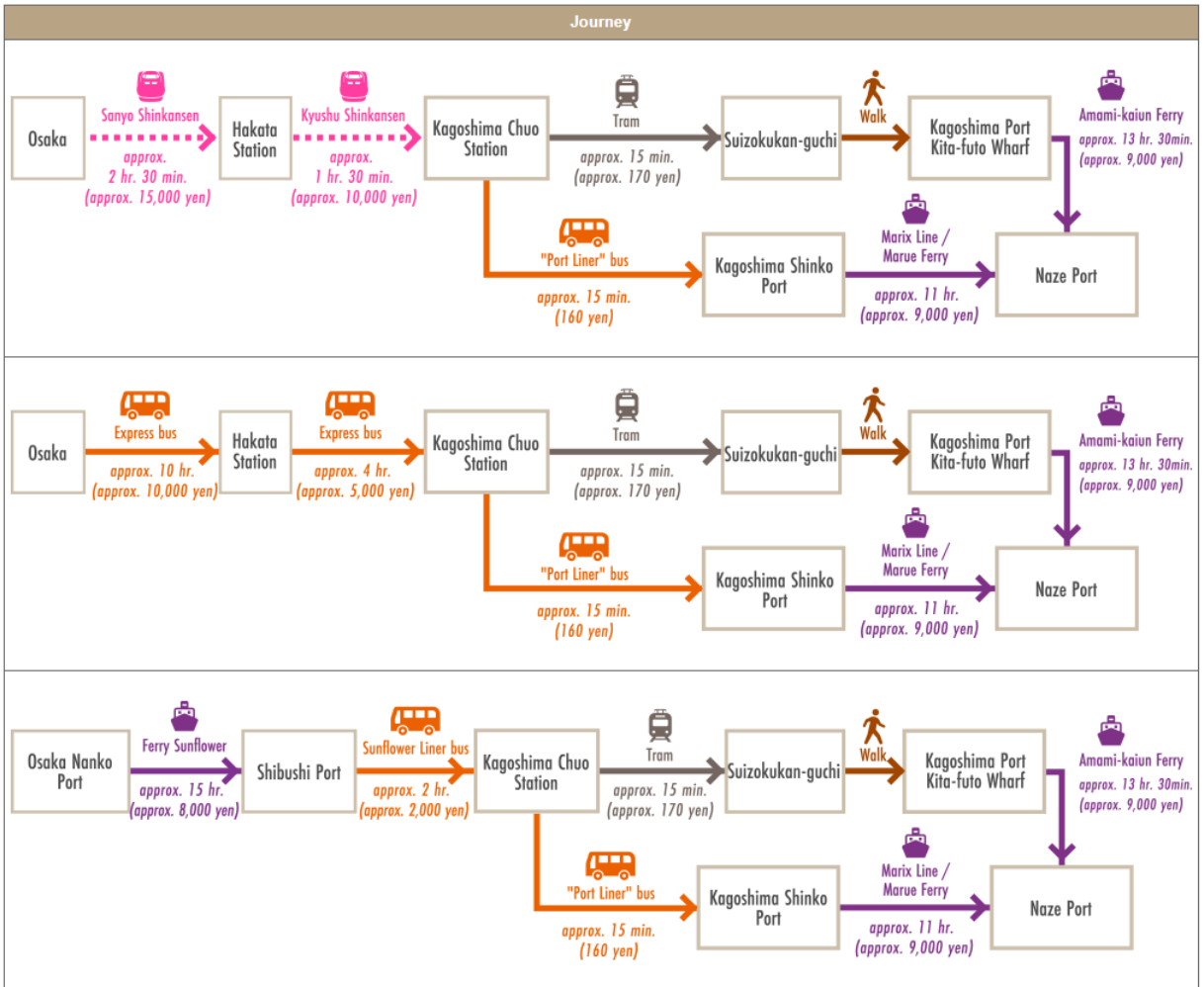
☺ **Cheaply**

Please note, fares are a rough approximation.

🕒 **Quickly**

Airline tickets are normal rates. Rates may change depending on the season, so please check the website for appropriate rates.

☺ **Cheaply**



Make a reservation

Shinkansen bullet trains
(tel: 0570-00-2486)

Express bus
(tel: 06-6772-1631)

Ferry Sunflower
(tel: 0120-3268-56)

Amami-kaiun Ferry
(tel: 099-222-2338)