

# Yakushima Island

## Access

### Q1. Where do you want to depart from?

From  
Kagoshima

From  
Fukuoka

From  
Osaka

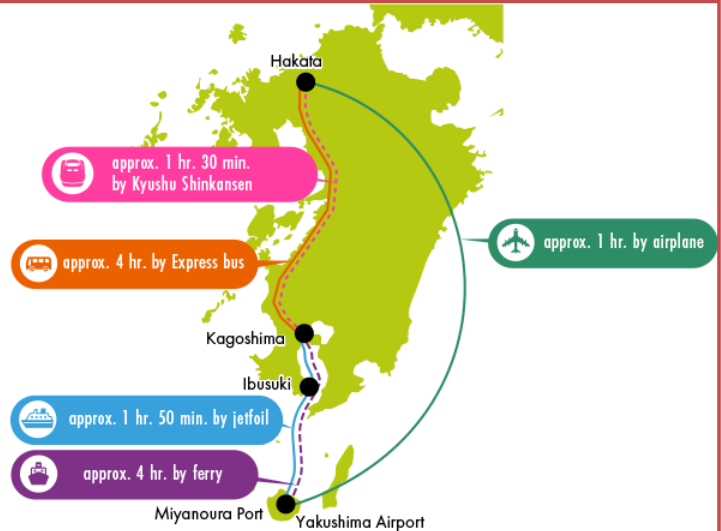
From  
Tokyo

#### From Fukuoka

You can reach Yakushima Island by airplane from Fukuoka, or by Shinkansen bullet train to Kagoshima and transferring to a ferry, jetfoil, or airplane.

##### Notice

The ferry terminals in Kagoshima are more than 1 hour's travel away from Kagoshima Airport. Please plan your travels accordingly.



### Q2. How would you like to travel?

\*You may use your JR pass for Shinkansen bullet trains.  
\*Journeys by sea are more subject to weather conditions than flights.

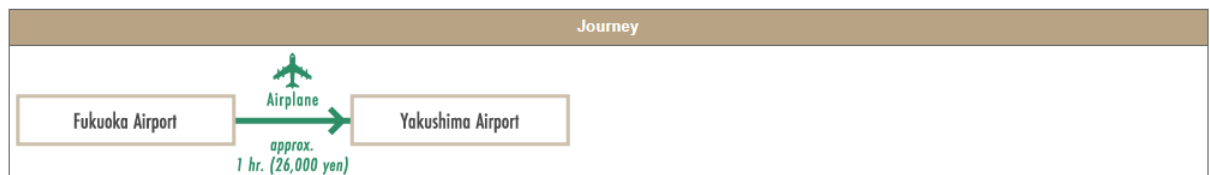
¥ Cheaply

Please note, fares are a rough approximation.

🕒 Quickly

Airline tickets are normal rates. Rates may change depending on the season, so please check the website for appropriate rates.

#### 🕒 Quickly



\*Jetstar also operates a direct flight from Narita Airport to Kagoshima Airport.

☑ Make a reservation

Japan Air Commuter (JAL)  
(tel: 0570-025-071)

## Q2.How would you like to travel?

\*You may use your JR pass for Shinkansen bullet trains.  
\*Journeys by sea are more subject to weather conditions than flights.

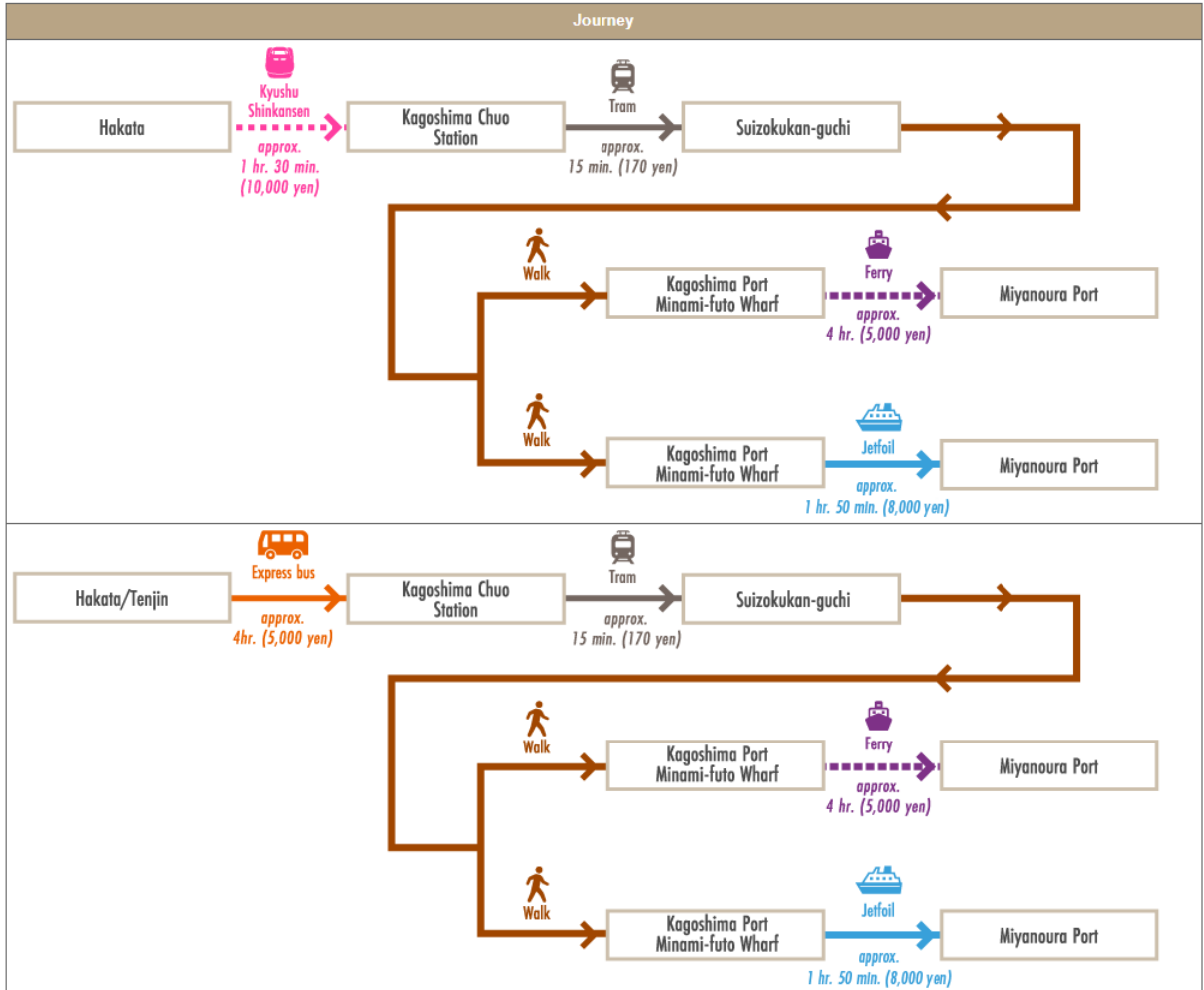
**☺ Cheaply**

Please note, fares are a rough approximation.

**🕒 Quickly**

Airline tickets are normal rates. Rates may change depending on the season, so please check the website for appropriate rates.

### ☺ Cheaply



**Make a reservation**

Shinkansen bullet trains  
(tel: 050-3786-3489)

Express bus  
(tel: 0570-00-1010)

Jetfoil  
(tel: 099-226-0128)

Ferry Yakushima  
(tel: 099-226-0731)