

# HOLIDAYS to NANSATSU



**Makurazaki**

**Ibusuki**



**Minamisatsuma**

**Minamikyushu**



So many beautiful sights!  
Bring your camera and  
let's go check them out.

So much to check out-  
From gourmet and hot  
springs to experiences.



**Nansatsu Regional Promotion Bureau, Kagoshima Prefecture**

Nansatsu Region Experience-based Tourism Promotion Project

FY 2021 Regional Development Promotion Project of Kagoshima Prefecture

## What is Nansatsu?

Located at the southern tip of Kyushu Island, Nansatsu is a well-known holiday destination and is a vernacular term indicating the southern half of the Satsuma peninsula in Kagoshima prefecture.

The region comprises four distinctive cities:

**Makurazaki**, known for dried bonito production;

**Ibusuki**, for hot sand baths on the beaches;

**Minamisatsuma**, the spectacular view available of its coastline; and lastly,

**Minamikyushu**, where real samurai residences and gardens are preserved.

In addition, you simply cannot run out of things to do once you arrive – from participating in local experiences and traditional workshops to exploring unspoiled nature and enjoying delicious food.

With this guidebook in hand, let's have a look at what Nansatsu is all about!

### Access to Nansatsu Cities

#### Downtown Makurazaki ▶

70 min by Car ... Kagoshima → Makurazaki (via National Route 225)  
150 min by Rail ... Ibusuki-Makurazaki Line  
JR Kagoshima-Chuo Sta. → JR Makurazaki Sta.

#### Downtown Ibusuki ▶

70 min by Car ... Kagoshima → Ibusuki (via National Route 226)  
80 min by Rail ... Ibusuki-Makurazaki Line  
JR Kagoshima-Chuo Sta. → JR Ibusuki Sta.

#### Downtown Minamisatsuma (Kaseda) ▶

60 min by Car ... Kagoshima → Kaseda  
(via National Route 225 → Prefectural Route 20)

#### Downtown Minamikyushu (Chiran) ▶

60 min by Car ... Kagoshima → Chiran (via National Route 226)



### Access to Kagoshima

**Air ▶**

- Tokyo (Haneda) – Kagoshima (110 min – 125 min)
- Tokyo (Narita) – Kagoshima (100 min – 135 min)
- Itami – Kagoshima (70 min)
- Nagoya – Kagoshima (75 min – 95 min)
- Kobe – Kagoshima (70 min)

#### Shinkansen (Bullet Train) ▶

- Shin-Osaka – Kagoshima-Chuo (3 hours 41 min)
- Hakata – Kagoshima – Chuo (1 hour 16 min)



## Nansatsu Where to Go & What to Do

### P4 – 7 ▶ Makurazaki City

- ▶ Savor the **Bonito**
- ▶ Indulge in **Arts** in a Seaside Town
- ▶ Experience Making Straw-Roasted Bonito at **Makurazaki Fish Center**
- ▶ Get Unwind with Sea Creatures at the **Local Mini Aquarium**
- ▶ Free Camping Site with **Unobstructed Ocean View**
- ▶ Feel the Craftsmanship at a **Local Shochu Distillery**
- ▶ Enjoy the **Ocean View** Along the Scenic Coastline
- ▶ **Back to Childhood** at the Playground
- ▶ A Must-Try Local Favorite, **Makurazaki Bonito Fisherman's Special**
- ▶ Visit Mainland Japan's **Southernmost Rail Terminal** and Receive a Certificate

### P8 – 11 ▶ Ibusuki City

- ▶ **Nourishment** Inside and Out
- ▶ Feel the **Power of Volcanoes**
- ▶ Finding Colorful **Postboxes**
- ▶ **Discover Aroma** That Defines You
- ▶ The Quintessential Summer Dish, **Nagashi Somen**
- ▶ Gotta Catch 'Em All! **Eevee Manhole Covers**
- ▶ Relish the Local Specialty, **Ontamaran Don** (Soft-Boiled Eggs over Rice)
- ▶ Walk Across to the **Island of Energy Vortex**
- ▶ See **Dried Bonito** in Production
- ▶ Refresh Yourself in This Unique **Steamy Sand**



### P12 – 15 ▶ Minamisatsuma City

- ▶ All-Day **Outdoor** Activities
- ▶ Getting Your Hands on **Crafts**
- ▶ Enjoy Beautiful Ocean and SUP in Summer
- ▶ Relish the **Blessings of Nature** at Farm-to-Table Café
- ▶ See Production at **Mars Whiskey Distillery**
- ▶ Drive Coast for **Unseen Views**
- ▶ **Seaside Onsen** and Private Family Bath
- ▶ **Cruise on a Bike** Through a Samurai Town
- ▶ Locally-Sourced **Pizza Making Class**
- ▶ Proudly Produced Kumquats Marmalade **'Jewel Jar'** Gift

### P16 – 19 ▶ Minamikyushu City

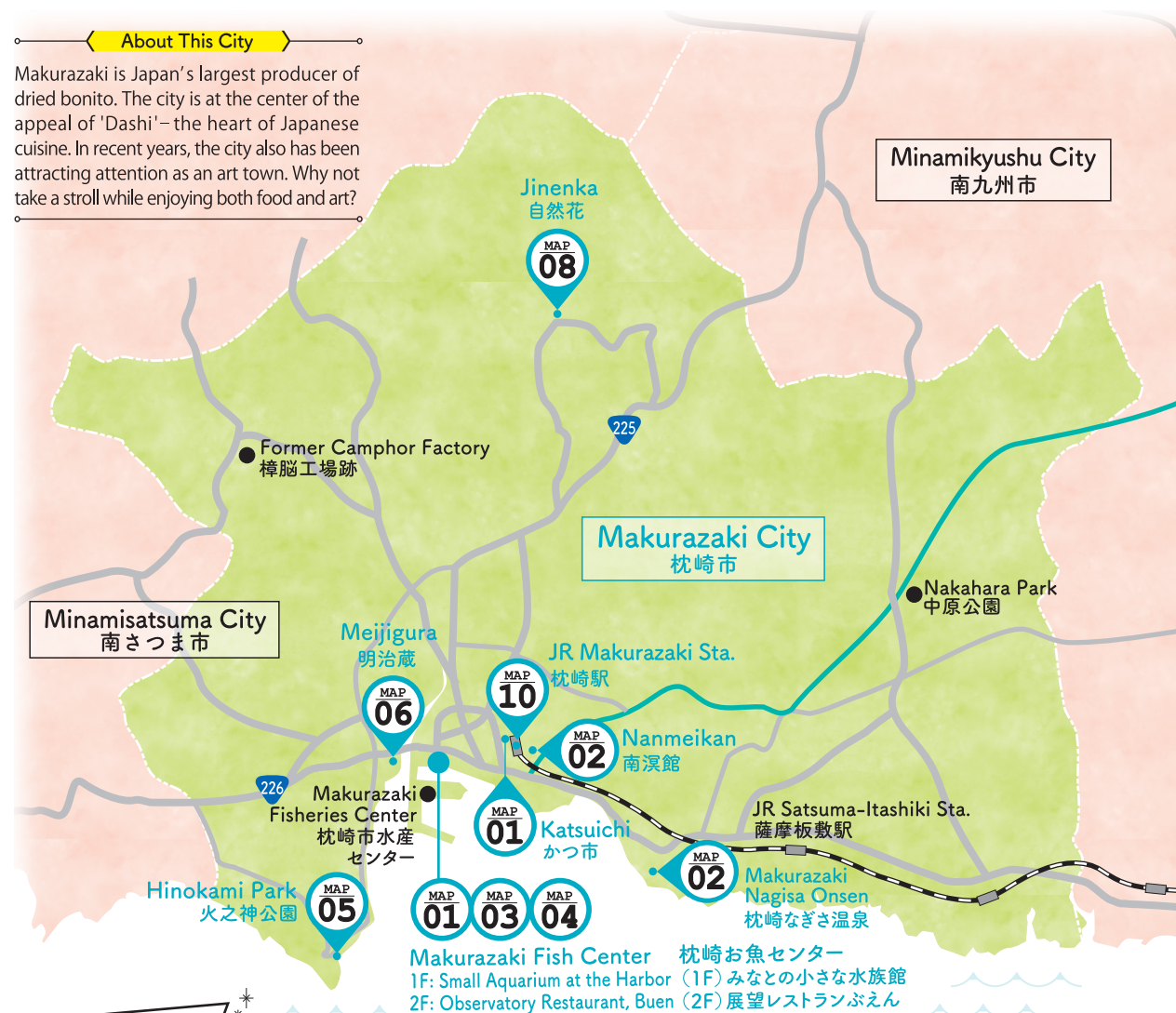
- ▶ Walking in **Bandokorobana Nature Park**
- ▶ A Full Day in **Samurai Residences**
- ▶ Indulge in History at **Kiyomizu Magaibutsu Complex**
- ▶ Experience Japanese **Country Life** at Fukunoya
- ▶ Experience the Craftsmanship Behind **Kawanabe Buddhist Altars**
- ▶ Experience **Riding and Caring for Horses** Among Lush Nature
- ▶ Picking Fruit with a Smile at Maeda **Strawberry Farm**
- ▶ Recharge Yourself with a Unique Style of **Wishing** at **Kamafuta Shrine**
- ▶ Relaxing in an **Onsen** with Town View
- ▶ Unwind with a Cup of Mellow **Chiran Tea**

Note: The information in this guidebook is subject to change due to the on-going pandemic. Contact businesses directly for hours and closures during Japanese holiday seasons.



### About This City

Makurazaki is Japan's largest producer of dried bonito. The city is at the center of the appeal of 'Dashi' – the heart of Japanese cuisine. In recent years, the city also has been attracting attention as an art town. Why not take a stroll while enjoying both food and art?



### Makurazaki Viewpoints

#### Nakahara Park



The view is simply spectacular. Tea fields everywhere and as far as the eye can see, the East China Sea approaching at the end of a famously straight road, and even the majestic Mt. Kaimon.

#### Makurazaki Port



Combined with the town itself, this Makurazaki Port makes such nostalgic scenery. Fishing boats in the calm sea add a touch to the picturesque sight. At dusk, the whole area turns orange in a stunning transformation.

#### Bonito Streamers



See bonito streamers in the air at Makurazaki Fisheries Center. Take in the unique scenery of a school of bonito streamers swimming cheerfully in the blue sky.

#### Former Camphor Factory



The former factory for camphor production, a major export of the Satsuma domain in the past. The mystic atmosphere gives off the impression of old ruins.

### MAP 01 Savor the Bonito

#### Activity



### Dried Bonito Factory Tour and Dashi Making Class

Nakahara Suisan is a local company that offers a wide variety of dashi-related products and experiences. Book popular Course D to see how dried bonitos are made and master the making of local-style miso soup using fresh bonito flakes.

**Odashi Company Katsuichi**  
(Nakahara Suisan)

☎0993.72.2232  
74-1 Higashi-Honmachi,  
Makurazaki City  
10:00 am–4:00 pm  
Close: Weekends, Holidays  
<http://www.katsu-ichi.com/about-katsuichi-english/>

**Dashi Making Experience**  
(Course D)  
Duration: 60–90 min  
Fee: Up to 2–¥8,800 / Group;  
3–19–¥3,300 / Person  
Note: Reservations Required  
7 Days in Advance

#### Lunch

Check out the restaurant on the second floor of Makurazaki Fish Center right next to the fishing port, where you can enjoy a rich variety of delicious seafood dishes.

The local delicacy, 'Makurazaki Bonito Fisherman's Special'



#### Observatory Restaurant, Buen

☎0993.73.2311 2F, 33-1 Matsunoo-cho, Makurazaki City  
11:00am–3:00pm Open Daily Parking Available

#### Souvenirs



Stop by the seafood market on the first floor for fresh fish and a variety of souvenirs including dried bonito, bonito miso, and bonito crackers.

#### Makurazaki Fish Center

☎0993.73.2311 33-1 Matsunoo-cho, Makurazaki City  
9:00am–5:00pm Open Daily Parking Available

### MAP 02 Indulge in Arts in a Seaside Town

#### Activity

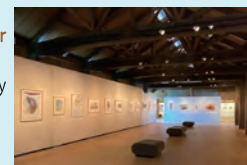


### Appreciate Arts and the View from Hill

Built on a hill, Nanmeikan is an art gallery which overlooks Makurazaki's downtown, the ocean, and even remote islands on a clear day. It serves as a cultural center for the city with exhibitions like paintings and sculptures, as well as historical documents and resources related to the region.

#### Makurazaki Nanmeikan Cultural Resource Center

☎0993.72.9998  
175 Yamate-cho, Makurazaki City  
9:00 am–5:00 pm  
Close: Mon. (The Following Day If This is a Holiday)  
Parking Available  
Note: Admission is Required at Some Occasions



Rent an electric bike at Makurazaki Sta. Information Center (Loc. 200 Higashi-Honmachi, Makurazaki City) and explore a total of 100 artworks displayed throughout the downtown.



#### Electric Bike Rentals

Operation Hours: 9:00am–5:00pm  
Fee: Every 2 Hours – ¥500  
(Up to 6 Hours);  
Over 6 Hours or All-Day – ¥2,000

#### Onsen

An authentic natural hot spring, which features a spectacular view from outdoor rock bathtubs.

#### Makurazaki Nagisa Onsen

☎0993.72.5080  
217 Iwado-cho, Makurazaki City  
8:00am–10:00pm  
Close: Irregular Basis  
Parking Available



#### Onsen & Hot Water Pool

Admission: 12 or Over – ¥400;  
6–11–¥150; Under 6 – ¥80



MAP  
03  
FOODExperience Making  
Straw-Roasted Bonito at  
Makurazaki Fish Center

Why not learn a unique bonito dish at the home of the bonito fishery? Using the freshest bonitos from the port, the surface of the fish is seared with fire made from straws. Another class where visitors shave dried bonitos into flakes is equally popular (Fee: ¥500. Reservations required)

## Straw-Roasted Bonito-Making Experience

Duration: Approx. 30 min  
Fee: Experience Only ¥1,000-;  
With Full Meal ¥2,500-  
Note: Reservation Required by  
the Day Before



## Makurazaki Fish Center

☎0993.73.2311 33-1 Matsunoo-cho, Makurazaki City  
9:00am-5:00pm Open Daily Parking Available

MAP  
04  
NATUREGet Unwind with Sea Creatures  
at the Local Mini Aquarium

Stop by and take a break at this cute little aquarium inside Makurazaki Fish Center on the first floor while shopping and dining. It only costs ¥100 to enter and you can view a variety of tiny fishes from the sea of Makurazaki and others. Also check out a giant fish tank in the Fish Center.

## Small Aquarium at the Harbor

Admission: ¥100 / Person



## Small Aquarium at the Harbor

☎0993.73.2311 33-1 Matsunoo-cho, Makurazaki City  
9:00am-5:00pm Open Daily Parking Available

MAP  
07  
NATUREEnjoy the Ocean View  
Along the Scenic Coastline

Satsunan Kaigan Prefectural Natural Park offers a spectacular coastal view with Mt. Kaimon. This ocean-viewing walking tour will take you through the four scenic spots of Makurazaki, accompanied by a local volunteer guide from the non-profit Makurazaki Expeditionary Party.

## Guided Ocean Viewing Tour

Duration: Approx. 2 Hours  
(Available 9:00am-5:00pm)  
Fee: ¥500/Person  
Note: Reservations Required 7  
Days in Advance



## Makurazaki Expeditionary Party

☎080.3139.8585 (Attn: Mr. Kitagawa)  
9:00am-9:00pm (Phone Reservations) Available Daily

MAP  
08  
NATUREBack to Childhood  
at the Playground

Jinenka is based in a forest at about a 15-minute drive from Makurazaki Station. The playground, which is free for everyone to use, features swings, tree houses, and obstacle courses. On weekends, a variety of nature experiences and classes including clock making are offered.

## Clock Making Experience

Duration: Approx. 30 min  
Fee: ¥700 (Supplies Included)  
Note: Requires Reservations 3 Days  
in Advance



## Nonprofit Educational Group, Jinenka

☎0993.58.1888 33 Miyama-cho, Makurazaki City  
10:00am-5:00pm Close: Irregular Basis

MAP  
05  
NATUREFree Camping Site with  
Unobstructed Ocean View

Hinokami Park is situated along the coast overlooking the East China Sea. The offshore Tategami Rock towers up to 42 meters high. It is a symbolic icon for Makurazaki citizens. A swimming pool is open during summer. Many families enjoy free campings and other activities on weekends at this popular spot.

## Camping Usage

—Free of Charge. No Reservations Required.  
—Barbequing is Permitted (Littering with  
Trash and Burnt Charcoal is Prohibited)  
—Hot Water Showers are Available On-site  
(Apr-Nov Only) — ¥100 for 3 Min of Use



## Hinokami Park

☎0993.76.1668 (Weekdays-Attn: Fisheries, Commerce, and Industry  
Div., Makurazaki City), ☎0993.72.1111 (Weekends-Makurazaki City Hall)  
47 Hinokami-Misakicho, Makurazaki City

MAP  
06  
FOODFeel the Craftsmanship at  
a Local Shochu Distillery

Satsuma Shuzo is a renowned distiller from Makurazaki, known for quality shochu spirit brands including Satsuma Shiranami. Here at Meijigura, you can observe the shochu-making process up close. After the tour, you can have lunch at the adjoining restaurant.

## Guided Distillery Tour

Duration: Approx. 30 min (Starts at  
11:00am, 1:30pm, 2:30pm)  
Fee: Free  
Note: Reservations Required



## Meijigura Kedogawa Distillery, Satsuma Shuzo

☎0993.72.7515 26 Tategami-Honmachi,  
Makurazaki City 9:00am-4:00pm  
Close: Dec 31, Jan 1 Parking Available

MAP  
09  
FOODA Must-Try Local Favorite,  
Makurazaki Bonito  
Fisherman's Special

'Makurazaki Bonito Fisherman's Special' is a local gourmet dish, created with the theme of 'full-on bonito'. It is a modern version of a fisherman's meal, where fishermen catch bonito, slice it open, and serve it over rice. Seven restaurants in town offer this dish, each with its own unique flavoring and garnishes.

## Offered at 7 Restaurants

Naniwa / Ichifuku / Gojo Sushi /  
Daitoku / Kikuya Shokudo /  
Kedogawa Beer House / Observatory  
Restaurant, Buen (2F Fish Center)



## Fisheries, Commerce, and Industry Div., Makurazaki City

☎0993.76.1668 64 Matsunoo-cho, Makurazaki City  
8:30am-5:15pm Close: Weekends, Holidays

MAP  
10  
NATUREVisit Mainland Japan's  
Southernmost Rail Terminal  
and Receive a Certificate

Makurazaki Station is the southernmost conventional rail terminal in mainland Japan. Its retro-style building received the Good Design Award in 2013. You can obtain a 'Certificate of Arrival' to commemorate your trip to the town. Certificates are available at Makurazaki Station Information Center. Can you find a heart-shaped stone slab near the station?

## Certificate of Arrival

Price: ¥200 each  
Available at: Makurazaki Station  
Information Center, Makurazaki Fish  
Center, Meijigura Distillery, etc.



## Makurazaki Station Information Center

☎0993.78.3500 200 Higashi-Honmachi, Makurazaki City  
8:30am-5:15pm Open Daily



## About This City

Best known for its steam beach-based sand baths, Ibusuki features many sightseeing spots such as Mt. Kaimon, known as 'Satsuma Fuji', and Lake Ikeda. The rapeseed flowers in spring are spectacular. This city is full of the sort of tropical atmosphere you will certainly enjoy.



## Ibusuki Viewpoints

Lake Ikeda



With a circumference of 15 km and a maximum depth of 233 m, it is the largest caldera lake on the island of Kyushu. The Rapeseed flowers in January are a wonderful sight to behold.

Mt. Kaimon



Mt. Kaimon is a 924-meter-high mountain that has been selected as one of the 100 best mountains in Japan. A gently spiraling trail will lead you to the panoramic view from the top.

Cape Nagasaki



Cape Nagasaki juts out from the southernmost tip of the Satsuma Peninsula. On a clear day, you can see Yakushima, Takeshima, and Iwo Jima islands.

Flower Park Kagoshima



The mild climate and surrounding pine forests make this botanical park a perfect place to enjoy seasonal plants from all over the world.

## SUGGESTED ROUTE

MAP  
01  
NATURE

## Nourishment Inside and Out



## Refresh Yourself in the Bath with the Cuisine

After passing through a mountain road, you will find 8 private family bathhouses. Each one is equipped with a different open-air bath and a Japanese-style resting room. Reservations can be made by phone from 9 am on the day of your visit.

Family Bathhouse, Nonoka Onsen  
☎0993. 22. 4888  
834-1 Higashikata, Ibusuki City  
10:00am-11:30pm  
(Last Check-in: 10:00pm)  
Close: The 1st, 3rd, and 5th  
Tue of the Month & the 3rd  
Wed of May

Admission: Private Family Bath  
Maximum at 4 Adults  
Weekday: 60 min-¥1,650  
Weekend & Holiday:  
60 min-¥1,980  
Holiday Season:  
50 min-¥1,980

## Lunch

Enjoy 'Atsuhime Gozen' (¥1,650) that features seasonal dishes at a cozy Kominka house.



Lunch at a Traditional Japanese House, Bairi  
☎0993. 25. 5111 2848-2 Iwamoto, Ibusuki City  
11:00am-3:30pm (Last Order: 2:30pm)  
Close: Tuesday and the 3rd Wednesday of the Month

## Souvenirs

Hachiware Farm is a café located inside Tropical Farm Yamagawa, where mango and other tropical fruits are grown. The monthly dessert sandwiches are popular. (Reservations are recommended)

Hachiware Farm  
☎0993. 34. 2605 3363-3 Yamagawa-Fukumoto, Ibusuki City  
11:30am-5:30pm Close: Wednesday  
Instagram: @hachiwarenouen

## Seasonal Fruit Sandwich



Menu  
Fruit Sandwich: ¥260-¥590 each  
Fillings: Mango, Grapes, Strawberries, etc.

## SUGGESTED ROUTE

MAP  
02  
NATURE

## Feel the Power of Volcanoes



## Fishing at Yamagawa Port with Local Guide

Interested in fishing experience with a local guide? Join this experience where beginners are welcomed to learn the ins and outs of fishing. The best part is you don't need to bring your own gear.

Nonprofit Ibusuki Tourism  
& Experience Group  
☎0993. 23. 8800  
2F, 1-3-2 Minato,  
Ibusuki City  
9:00am-5:00pm  
Close: Irregular Basis

Fishing Experience Tour  
Duration: 2 Hours  
Fee: ¥2,200 Capacity: 4-20  
Note: Fishing Gear is Included.  
Requires Reservations 3 Days in Advance.

## Stroll



Why not walk with a local guide down local streets in the Unagi district where you can eat and see how naturally steamed foods are cooked using 'Sume', a local steamer stove.

Nonprofit Ibusuki Tourism  
& Experience Group  
☎0993. 23. 8800  
2F, 1-3-2 Minato,  
Ibusuki City  
9:00am-5:00pm  
Close: Irregular Basis

Guided Walking & 'Sume' Steam  
Cooking Experience  
Fee: 12 or Over — ¥1,500;  
6-11 — ¥500; Under 6 — Free  
Duration: Approx. 90 min  
Note: Requires Reservations 3  
Days in Advance

## Onsen

A public bathhouse near Lake Unagi opened its door in 1901. It is known that the local historical figure Saigo Takamori stayed here. Watch out for its rather hotter than normal water.



Unagi Onsen  
☎0993. 35. 0814 6517 Yamagawa-Narikawa, Ibusuki City  
Jun-Sep: 8:00am-1:00pm; 3:00pm-8:00pm (Last Check-in: 7:30pm)  
Oct-May: 8:00am-8:00pm (Last Check-in: 7:30pm)  
Close: 1st Monday of the Month (2nd Mon if the 1st Mon is a Holiday.)



MAP  
03  
STROLL

## Finding Colorful Postboxes



Nishi-Oyama Station is Japan's southernmost JR train station, and there is a functioning yellow postbox believed to bring happiness to recipients. In addition, you can also find other colored postboxes in the Roadside Station, Sakana; there is a pink one for matchmaking, and a green one for familial and friend relationships.



Tourism General Affairs Sect., Tourism Div., Ibusuki City  
☎0993. 22. 2111 2424 Jutcho, Ibusuki City  
8:30am–5:15pm Close: Weekends, Holidays

MAP  
04  
NATURE

## Discover Aroma That Defines You



This herbal farm was established in 1941. Perfumes and essential oils are produced using natural fragrance extracted from camphor trees. Regular lectures on aroma, seasonal experiences such as distillation in fall are also offered. Come visit to find your favorite fragrance. Check website for more info.

**Aroma Lecture (Requires Reservations)**  
Duration: 90min–120min  
Fee: ¥2,500–¥3,000  
Note: Distillation Experience Costs ¥1,000



Kaimon Sanroku Koryoen  
☎0993. 32. 3321 5926 Kaimon-Kawashiri, Ibusuki City  
9:00am–5:00pm Close: Tuesday (Except for Holidays)

MAP  
07  
FOOD

## Relish the Local Specialty, Ontamaran Don (Soft-Boiled Eggs over Rice)



'Ontamaran Don' or literally a hot spring egg bowl is a bowl of rice topped with a soft-boiled egg made on the unique hot sand bath. Fifteen local restaurants offer the dish with their own iteration, ranging from Japanese and Chinese to Western.

**Offered at 15 Restaurants**  
Local restaurants within Ibusuki offer the dish with their own unique twists.



Ibusuki Chamber of Commerce and Industry  
☎0993. 22. 2473 1-15-13, Omure, Ibusuki City  
8:30am–5:15pm Close: Weekends, Holidays

MAP  
08  
STROLL

## Walk Across to the Island of Energy Vortex



Between March and October, a sandy path appears in low tide, connecting the Chiringajima Island to the land. Also referred to as the 'Island of Matchmaking', the isle features attractions such as 'Chirin's Heart' photo spot near sandbar, and 'Chirin's Bell' at the observatory. Drive for about 10 minutes to the top of Mt. Uomi for a panoramic view.



**Timetable of Chirin Sandbar**  
Scan the QR Code to See When the Sandbar Appears in a Downloadable File.

Tourism General Affairs Sect., Tourism Div., Ibusuki City  
☎0993.22.2111 2424 Jutcho, Ibusuki City 8:30am–5:15pm  
Close: Weekends, Holidays



MAP  
05  
FOOD

## The Quintessential Summer Dish, Nagashi Somen



Here, you can experience catching and eating flowing noodles chilled with cold running water from one of Japan's top 100 springs. The most popular option is Set A, which includes somen noodles, rice balls and fish dishes. From November to mid-March, the winter menu includes warm noodles and trout bowls.

**Set Lunch A — ¥1,680**  
Somen Noodles, Grilled Trout, Carp Miso Soup, 2 Rice Balls, and Carp Sashimi



Tosenkyo Flowing 'Somen' Nagashi  
☎0993. 32. 2143 5967 Kaimon-Jutcho, Ibusuki City 10:00am–3:30pm  
(Last Order: 3:00pm) The Hours May be Extended during 'Golden Week' and Summer. Note: Hours May Change Due to Weather

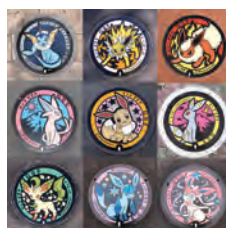
MAP  
06  
STROLL

## Gotta Catch'Em All! Eevee Manhole Covers



©Pokémon. ©Nintendo/Creatures Inc./GAME FREAK inc.

Manholes covers with designs featuring the popular Pokémon character 'Eevee' and its evolved variants have been installed at nine locations in the city. You can find Eevee in front of the police box at Ibusuki Station.



Tourism General Affairs Sect., Tourism Div., Ibusuki City  
☎0993. 22. 2111 2424 Jutcho, Ibusuki City  
8:30am–5:15pm Close: Weekends, Holidays

More on Eevee Manhole Covers



MAP  
09  
FOOD

## See Dried Bonito in Production



The fishing town Yamagawa produces dried bonito as a local specialty. In this tour, you'll learn their production method and equipment such as the giant freezer set at -50 °C. After the tour, you'll also make local-style miso soup using dried bonito flakes, which will be shaved by yourself. Tours are available on weekdays 9:00am–2:00pm.

**Dried Bonito Production Factory Tour**  
Duration: 90 min  
Fee: 12 or Over—¥1,500; 6–11—¥500; Under 6—Free  
Requires Reservations 3 Days in Advance



Nonprofit Ibusuki Tourism & Experience Group  
☎0993. 23. 8800 2F, 1-3-2 Minato, Ibusuki City  
9:00am–5:00pm Close: Irregular Basis

MAP  
10  
ONSEN

## Refresh Yourself in This Unique Steamy Sand



'Suna-Mushi Onsen' is where you lie in the sand and bathe your entire body in the heat released by the gushing hot spring below you. You can try this on the beach at the low tide under good weather, and the roofed bathing area in other cases. Regular baths are also available.

**Admission**  
13 or Over—¥1,100  
Under 13—¥600  
Note: Rental Yukata Bathrobe is Included.

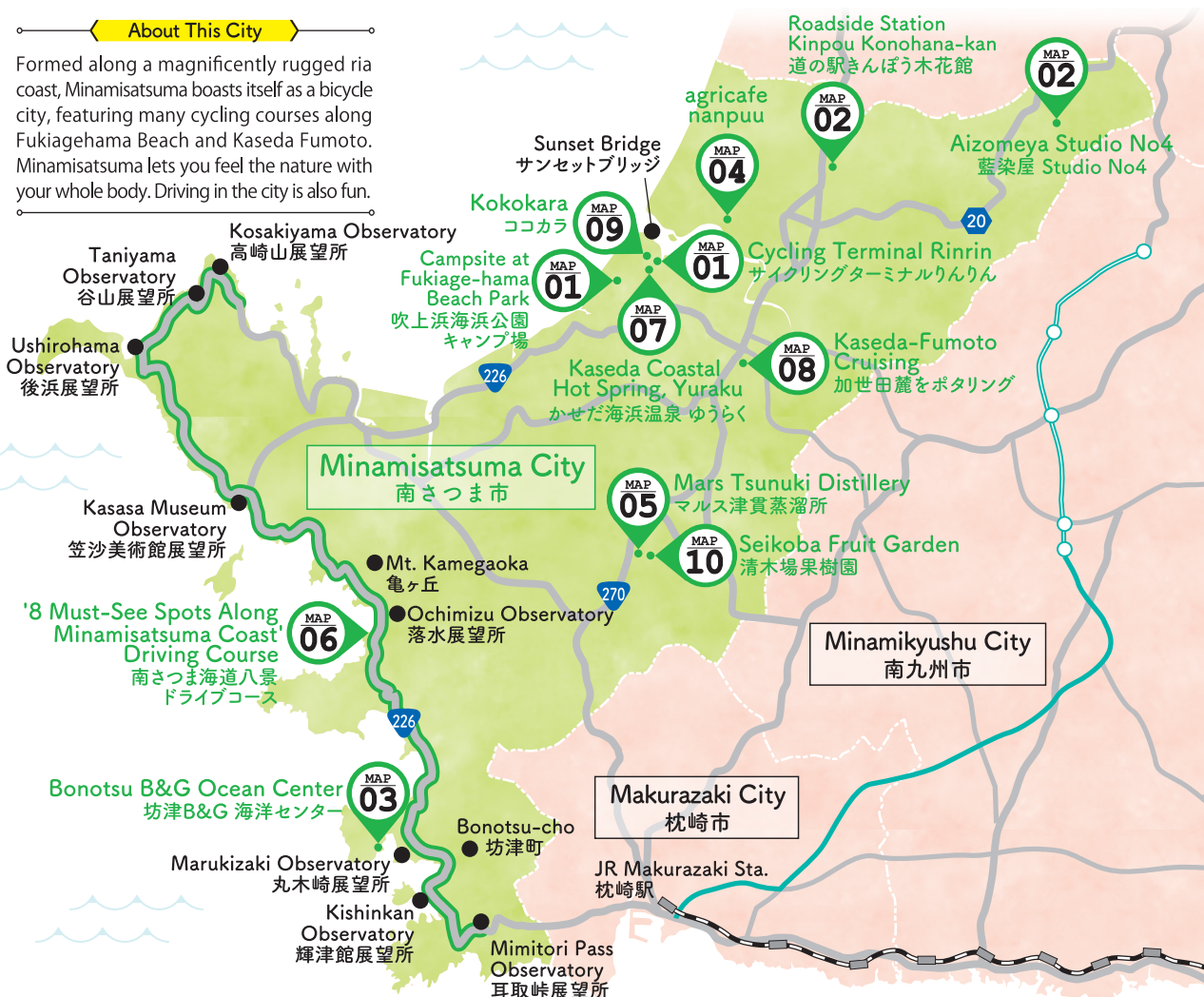


Sand Bath Hall Saraku  
☎0993. 23. 3900 5-25-18 Yunohama, Ibusuki City  
Weekday—8:30am–12:00pm, 1:00pm–8:30pm (9:00pm Close)  
Weekend, Holiday—8:30am–8:30pm (9:00pm Close)  
Open Daily (May Close in July and December for Maintenance)  
<http://sa-raku.sakura.ne.jp/en/index.html>



## About This City

Formed along a magnificently rugged ria coast, Minamisatsuma boasts itself as a bicycle city, featuring many cycling courses along Fukiagehama Beach and Kaseda Fumoto. Minamisatsuma lets you feel the nature with your whole body. Driving in the city is also fun.


Minamisatsuma  
Viewpoints

## Sunset Bridge



Spanning the Manose River, Sunset Bridge is a 405-meter-long and 6-meter-wide expanse for pedestrians and cyclists. This is a popular cycling spot for its beautiful silhouette against the setting sun.

## Towns of Bonotsu



Using the Bonotsu Tourist Information Center as a base, tourists enjoy strolling around the town once prospered as foreign trading port. Stop by the ruins of Ichijoin Buddhist Temple and the former smuggling trade houses.

## Mt. Kamegaoka



The observatory at the top of the 387-meter-high mountain offers a beautiful view overlooking the rugged ria coast in the southwest. It is easily accessible by car.

## Mars Tsunuki Distillery



A whiskey distiller featuring the café bar Hojo, the renovated former residence of Mr. Hombo. Take in the majesty of long-lasting wooden architecture and the ever-changing seasonal garden.

## SUGGESTED ROUTE

MAP  
01  
NATURE

All-Day  
Outdoor Activities

## Activity


Pedaling Away to  
Spectacular Views

Let's go out and cruise around the nature of Minamisatsuma on bike. Take the 'RinRin Road', a shared road for cyclists and pedestrians, which conveniently connects the city center, Fukiage-hama Beach Park and the seaside. The photogenic Sunset Bridge is a popular spot to visit. Enjoy the nice breeze and seasonal landscape.

## Cycling Terminal Rinrin

☎0993. 53. 8739  
1952-2 Kaseda-Takahashi,  
Minamisatsuma City  
(Kaseda Koryu Center Sanpal)  
Operation Hours:  
9:00am-5:00pm

## Bike Rentals

Fee (2 Hours): Electric, Hybrid,  
Bikes with Child Seat—¥500  
Child Bikes—¥200  
Child Bikes with Training Wheels—¥100

## Activity

Visit the oceanfront campground where you can enjoy the outdoors to the fullest. The facilities include bungalows and drive-up camping areas. Why not plan a gathering and spend a day enjoying barbecuing? Check the official website for facility details and availability. Call for reservations.



Enjoy barbecuing fresh foods bought from local stores.

Spacious drive-up  
campgrounds in a pine forest.



## Campsite at Fukiage-hama Beach Park

☎0993. 52. 7600  
1936-2 Kaseda-Takahashi,  
Minamisatsuma City  
Operation Hours:  
8:30am-5:00pm

## Camping Usage

Hours: 2:00pm-11:00am (Next Day)  
Note: Check-out for the Bungalows is 10:00am.  
Fee: ¥1,160 — Note: Price Differs per  
Accommodation. Facilities: Kitchen, Washroom, Flush  
Toilet, Laundry Room, Hot Shower (All Free to Use)

## SUGGESTED ROUTE

MAP  
02  
CRAFTS

Getting Your  
Hands on Crafts

## Activity


Pursuit of 'Japan Blue'  
in Traditional Dyeing

An indigo dyeing studio that has inherited the 'natural lye and fermentation technique' from the Edo period. Created by the techniques of skilled craftsman and the Minamisatsuma environment, 'Japan Blue' is exquisite. The indigo-dyed products are on display for sale at the stone house gallery on the premises. The dyeing experience requires online reservations through a website at least by 3 days in advance.



Nature of Kinpou-cho Surrounds  
the Workshop

A Scarf Dyed in Japanese  
Traditional Indigo 'Japan  
Blue'



## Aizomeya Studio No4

☎0993. 78. 2897  
7764-1 Daizaka,  
Kinpou-cho,  
Minamisatsuma City  
10:00am-6:00pm Open  
Daily Parking Available  
<https://aizomeya.work/>

## Indigo Dyeing Experience

Handkerchief—¥1,650  
Bandana—¥2,000  
Note: Requires Reservations 3  
Days in Advance

## Lunch

Try your hand at making  
soba using locally grown  
buckwheat flour. Handmade  
noodles taste even more  
exceptional. You can choose  
to take your handmade soba  
home.

Soba and locally-grown  
Kinpou-Koshihikari rice  
is a popular combo.



## Roadside Station Kinpou Konohana-kan

☎0993. 77. 3833  
1383 Ikebe, Kinpou-cho,  
Minamisatsuma City  
9:00am-6:00pm (Restaurant:  
11:00am-Last Order 2:30pm)  
Close: 2nd Tue. of the Month

## Soba Making Experience

Duration: Approx. 40 min  
Fee: ¥2,980 (Add ¥550 for  
Additional Participant. Up to 4)  
Note: Requires Reservations





## Enjoy Beautiful Ocean and SUP in Summer



There is no better place to experience standup paddleboarding than here at Bonotsu B&G Ocean Center (Loc. 807-1 Kushi, Bonotsu-cho). Instructors will guide you through it so beginners are welcomed. Canoes and dune buggies/boats are also available. Limited operation in summer only. Reservations are recommended.

### Standup Paddleboarding

Operation Hours: 9:00am–4:30pm  
Fee ( Hourly ): 16 or Over—¥220;  
7–15—¥100  
Note: Contact for Schedule.  
May Also Close Due to Weather.



**Education Div., Minamisatsuma City Board of Education**  
☎0993. 67. 0170 9424-1 Bo, Bonotsu-cho, Minamisatsuma City  
(Kishinkan, Bonotsu History Museum) 9:00am–5:00pm Close: Weekends



## Relish the Blessings of Nature at Farm-to-Table Café



Straight from Nanpou Vegefarm, this farm-to-table café is where you get to appreciate the real taste of local ingredients. The salad pizza topped with cheese and dry-cured ham has so many fresh vegetables that they stick out of the dough. Make a combo with a drink for ¥1,210. Drinks can also be ordered for takeaway.

### Menu

—Salad Pizza with Baby Greens... ¥990  
—Red Shiso Perilla Soda... ¥440  
—Chiran Green Tea Latte... ¥440

### agricafe nanpou

☎0993. 78. 3080 3075-13 Takahashi, Kinpou-cho, Minamisatsuma City 10:30am–5:00pm (Last Order: 4:30pm)  
Close: Wednesday, 2nd Sunday of the Month Parking Available  
Instagram: @agri\_cafe\_nanpou



## Seaside Onsen and Private Family Bathtub



From 1,300 meters underground, the geothermally hot water contains abundant minerals. The saltiness of the water is unique to seaside hot springs. A variety of baths such as outdoor bath with a garden are available. For families, the private family baths are also a great way to relax.

### Admission

Regular Baths: 12 or Over—¥420;  
6–11—¥150; Under 6—¥80  
Private Family Bath: ¥1,560 / Room  
(Up to 1 Hour)  
Note: Add ¥520 for Additional 30 min Use of Room

### Kaseda Coastal Hot Spring, Yuraku

☎0993. 52. 0226 1952-2 Kaseda-Takahashi, Minamisatsuma City  
(In Kaseda Sanpal) 10:00am–9:00pm (Last Check-in: 8:00pm)  
Close: the 2nd Tuesday of the Month (Open if Holiday Falls on)



## Cruise on a Bike Through a Samurai Town



On this bike tour, you will leisurely cruise through the old-fashioned streets of Kaseda-Fumoto with a map and stop by Takeda Shrine while indulging in the history. Tour includes a visit to samurai residences and matcha green tea whisking experience. Confirm the meeting place at the time of reservation.

### Guided Kaseda-Fumoto Cruising Experience

Duration: Approx. 2 Hours  
Fee: ¥1,500 / Person (Min. 2 Participants)  
Note: Requires Reservations.  
Bike Rentals Only: ¥100 / Hour

### Minamisatsuma City Tourism Association

☎0993. 53. 3751 34-2 Kaseda-Honcho, Minamisatsuma City  
9:00am–6:00pm Close: Monday  
<https://kanko-minamisatsuma.jp/en/>



## See Production at Mars Whiskey Distillery



The southernmost whiskey distillery in mainland Japan. The distiller takes advantage of the abundant nature and the warm climate in order to 'nurture' whiskeys over time. An original whiskey made in Nagano prefecture is also available. Enjoy tasting and shopping at the adjacent bar and shop in Hojo, a renovated former residence of Mr. Hombo.

### Self-Guided Whiskey Distillery Tour

Fee: Free  
Reservations: Use Online Form or Fax. Scan the QR Code for More Info.



### Hombo Shuzo, Mars Tsunuki Distillery

☎0993. 55. 2121 6594 Kaseda-Tsunuki, Minamisatsuma City 9:00am–4:00pm  
Open Daily Parking Available



## Drive Coast for Unseen Views



Let's put on the gas to explore the far end of the Nansatsu region. 8 must-see viewpoints are there for explorers to find along the coastline—Including Kosakiyama Observatory, which provides a panoramic shoreline view; and Ochimizu Observatory, where the turtle-shaped cliff awaits discovery. Indeed, magnificent nature and cultural heritage await your arrival.

### 8 Must-See Spots Along Minamisatsuma Coast

—Kosakiyama Observatory  
—Kasasa Museum Observatory (Top Photo)  
—Mimitori Pass Observatory (Right Photo)  
—Ochimizu Observatory and 4 More

### Tourism Exchange Div., Minamisatsuma City

☎0993. 53. 2111 2648 Kaseda-Kawabata, Minamisatsuma City  
8:30am–5:15pm Close: Weekends, Holidays



## Locally-Sourced Pizza Making Class



With its stone oven and its provision of local ingredients with savory sauce and toppings of your choice, this café offers the authentic pizza cooking experience. Lunch and drinks are available if you stop by to dine. Hours are updated on their Instagram—Use the QR code to access.

### Pizza Making with Stone Oven Experience

Fee: ¥1,000 per Pizza (dia. 20 cm)  
Note: Requires Reservations.  
Experiences are Offered Mainly on Weekends.

### Natural Yeast & Naturally-Grown Food Café, Kokokara

☎0993. 53. 8739 1952-2 Kaseda-Takahashi, Minamisatsuma City (In Kaseda Sanpal) 11:30am–3:30pm Close: Irregular Basis



## Proudly Produced Kumquats Marmalade 'Jewel Jar' Gift



For 100 years and through three generations, this orchard farm has been providing the quality citrus fruits. Only ripe kumquats 'Koganemaru', picked one by one by hand, are used to make the flavorful, low-sugar Jams—'Jewel Jar of Fragrance'. The pulpy and spreadable types are 650 yen each.

### Kumquats Marmalades Available at:

—Heartful Market Pico  
—Minamisatsuma Koryu Center  
—Niinamaru  
—Minami Satsuma City Tourism Association and More

### Seikoba Fruit Garden

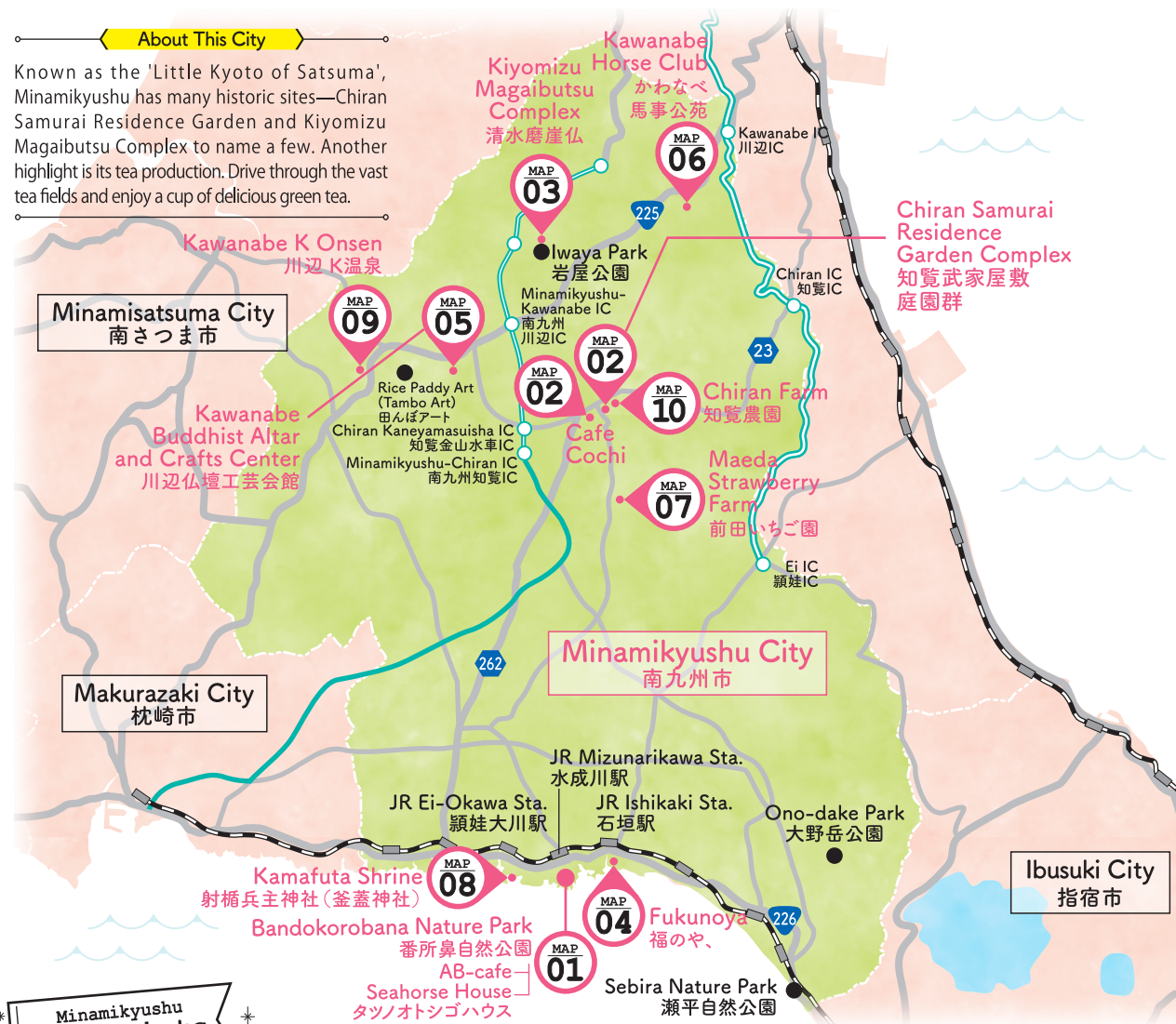
☎0993. 55. 3260 6568 Kaseda-Tsunuki, Minamisatsuma City  
10:00am–4:00pm Close: Weekends, Holidays





## About This City

Known as the 'Little Kyoto of Satsuma', Minamikyushu has many historic sites—Chiran Samurai Residence Garden and Kiyomizu Magaibutsu Complex to name a few. Another highlight is its tea production. Drive through the vast tea fields and enjoy a cup of delicious green tea.



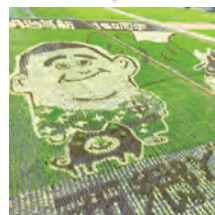
## Minamikyushu Viewpoints

### Seбира Nature Park



Located along National Route 226, Seбира Park has splendid views of Mt. Kaimon (Satsuma Fuji). Moving focus to the ocean, a glimpse of the Iwojima and the Yakushima Islands will be caught on the horizon.

### Rice Paddy Art (Tambo Art)



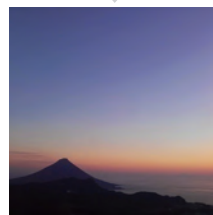
Visit Tabeta in Kawanabe-cho from late July through mid-September to enjoy a local entertainment known as Tambo Art. In this creative art form, different colored rice grasses are used to bring to the eye a variety of pictures.

### Iwaya Park



The rich natural scenery of Iwaya Park is a great place to relax and enjoy its beauty—from cherry blossoms in spring to fireflies in summer and autumn foliage in fall.

### Ono-dake Park



Ono-dake Park is known as a viewing spot for the first sunrise of the year. You can drive close to the mountain top and ascend the 108 steps to see a 360-degree panorama.

## MAP 01 NATURE SUGGESTED ROUTE Walking in Bandokorobana Nature Park

### Activity



### Refresh Yourself with 'Truly the Spectacular View' at Bandokorobana Nature Park

This park was named after the old guardhouse (bandokoro) of the feudal Satsuma clan. Ino Tadataka, who traveled all over Japan to map the country, praised the view as 'truly the spectacular view.' Enjoy the view of Mt. Kaimon from the observation area and ring the good luck bell 'Kissho' while making a wish.

#### Bandokorobana Nature Park

☎0993. 83. 2511  
(Commerce, Industry, and Tourism Div., Minamikyushu City)  
5202 Beppu, Ei-cho, Minamikyushu City



### Lunch & Sweets

Have an appetite for a sandwich and parfait? We recommend AB-cafe located in the Iseebisou ryokan inn. You can spend a relaxing time on the deck facing Bandokorobana Nature Park.



#### AB-cafe, Iseebisou

☎0993. 38. 0160  
5202 Beppu, Ei-cho, Minamikyushu City  
Café Hours: 10:30am–Last Call 3:00pm (4:00pm on Weekends, Holidays) Close: Irregular Basis  
Instagram: @abcafe\_iseebisou



#### Seahorse House

☎0993. 38. 1883 5202-2 Beppu, Ei-cho, Minamikyushu City  
10:00am–4:30pm Close: Tuesday (Except for Holidays)  
Admission: Free  
Instagram: @tatsunootoshigohouse

Walk into Seahorse House in the Bandokorobana Nature Park for the famous lucky seahorse straps (¥ 800–) that contain actual seahorse specimens. They come in a wide variety and make great souvenirs.

## MAP 02 CULTURE SUGGESTED ROUTE A Full Day in Samurai Residences

### Activity



### Spinning Cotton Yarn and Making of Accessories in an Authentic Samurai Residence

Visit Miyake Family's residence in Chiran Samurai Residence Complex to enjoy this experience. The participants use a spindle to spin harvested cotton into yarn and braid it into 'Misanga' bracelets. Fee: ¥ 2,000 per person for 2 Hours (Min.: 2) including an admission ticket to Chiran Gardens. Reservations are required one week in advance.

#### Chiran Samurai Residence Cotton Farm

☎080. 6619. 1861  
6222 Kori, Chiran-cho, Minamikyushu City  
9:00am–5:00pm Close: Irregular Basis  
Instagram: @bukekashiki\_cotton



### Stroll

Nicknamed the 'Little Kyoto of Satsuma', the town of Chiran exhibits both traditional and beautiful scenery from the samurai residences and Japanese gardens to stone walls and hedges.



#### Chiran Samurai Residence Garden Complex

☎0993. 58. 7878 13731-1 Kori, Chiran-cho, Minamikyushu City (Chiran Samurai Residence & Garden Preservation Assoc.)  
9:00am–5:00pm Open Daily Admission: Adults ¥530 (senior high school students or older), Children ¥320 (elementary and junior high school students)



### Sweets



Try the menu made with local ingredients at this relaxing old house café. Highly recommended is the 'Chiran Matcha Pancakes' combo with a drink (¥ 1,100)

#### Cafe Cochi

☎0993. 76. 8255 93 Kori, Chiran-cho, Minamikyushu City  
11:00am–10:00pm (Lunch: 11:00am–2:30pm, Café: 2:30pm–5:30pm, Dinner: 5:30pm–Last Order 7:30pm) Close: Irregular Basis  
Note: Sunday Closes at 4:00pm. Reservations Required for Dinner.  
Instagram: @cafe-cochi



MAP  
03  
CULTUREIndulge in History at  
Kiyomizu Magaibutsu  
Complex

A group of sculptures such as the largest five-ring pagoda in Japan, Sanskrit Characters and the statue of Kannon are carved into a cliff of 20 meters high by 400 meters wide. It is said to have been created in the Heian period (794-1185) by the former Heike warriors in memory of their ancestors.

## Iwaya Park

Enjoy the Seasonal Foliage in the Surroundings at a Japanese-style Café, Sakura no Yakata, Located Inside Iwaya Park, where Kiyomizu Magaibutsu Complex Can be Viewed.



## Kiyomizu Magaibutsu Complex

☎0993. 83. 4433 (Cultural Assets Div., Minamikyushu City)  
Kiyomizu-Yakushinoshita, Kawanabe-cho, Minamikyushu City

MAP  
04  
LIFESTYLEExperience Japanese  
Country Life  
at Fukunoya

Fukunoya is a cozy inn that looks like the idyllic grandma's house in the countryside. The 'Small Trip' plan and 'Experience Programs' are popular among visitors. Why not enjoy picnics on a tea field, a walking tour on a shore, harvesting seasonal vegetables? Feel free to contact Fukunoya if you are interested.

## 'Small Trip', 'Experience Programs'

- Making of Original Flavored Chiran Tea—¥2,500
- Tea Fields Picnics—¥3,000
- Seasonal Farming Experience (Includes Tea time)—¥2,000

Note: Reservations Required



## The Lifestyle Inn, Fukunoya

☎050. 3567. 1850 503-4 Beppu, Ei-cho, Minamikyushu City  
Check-in: 3:00pm-8:00pm Check-out: 10:00am Reception: 10:00am-5:00pm

MAP  
07  
FOODPicking Fruit with a Smile  
at Maeda Strawberry Farm

This strawberry picking experience brings a smile to visitors every year. The strawberries are grown in greenhouses, so you can pick them even on rainy days. In addition, making jam and daifuku dessert mochi with freshly picked strawberry filling are also highly recommended (Price: ¥3,000/set). The farm is easily accessible by car.

## Price List:

- Strawberry Picking: Per 100g — ¥260; A 250 g Pack — ¥650
- Packed Strawberries: A 250 g Pack—¥550 Note: Contact for More Info on Experience



## Maeda Strawberry Farm

☎0993. 84. 2182 3319-2 Nagasato, Chiran-cho, Minamikyushu City  
10:30am-5:00pm Close: January 1st & 2nd. May Close on Random Dates.

MAP  
08  
NATURERecharge Yourself with a  
Unique Style of Wishing  
at Kamafuta Shrine

The Kamafuta Shrine is located on a rocky reef in an inlet and is visited by many celebrities. The unique 'Kamafuta Wishing', in which people pray by placing a lid of a cauldron (kamafuta) on their heads, and make the 'Kamafuta Toss', in which people throw unglazed kamafuta, are both said to bring good luck and ward off bad luck.

## Kibo-no Misaki (Cape of Hope)

Behind of the Shrine is Kibo-no Misaki, Surrounded by Rugged Shores and the Ocean, where the Great View of Mt. Kaimon and the Sunset Can be Seen.



## Kamafuta Shrine

☎0993. 38. 2127 (Kamafuta Shrine Operation and Management Committee)  
6827 Beppu, Ei-cho, Minamikyushu City

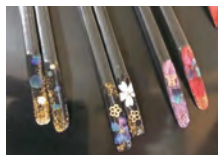
MAP  
05  
CRAFTSExperience the  
Craftsmanship Behind  
Kawanabe Buddhist Altars

In this experience, you can challenge craftsmanship of Kawanabe Buddhist Altar making. Five courses are available. Fee: ¥2,000—, Min of 4 persons. Gold Leaf Stamping Experience using special tweezers used by craftsmen can be enjoyed by children as well. Some courses require reservations.

## 5 Traditional Craftwork Experience Courses

- Gold Leaf Stamping / Gold Leafing / Gold Lacquer / Inlaid Mother-of-Pearl / Making Furin Wind Chime with Metal Carving

Note: Fees and the Number of Participants Differ Per Course



## Kawanabe Buddhist Altar and Crafts Center

☎0993. 56. 0240 (Kagoshima Pref. Kawanabe Buddhist Altar Cooperative Assoc.)  
6140-4 Hirayama, Kawanabe-cho, Minamikyushu City  
8:30am-5:00pm Close: Weekends, Holidays (Negotiable)

MAP  
06  
NATUREExperience Riding and  
Caring for Horses  
Among Lush Nature

Set in an abundance of natural environment of Kawanabe, this local horse club offers the experience of riding and caring for horses. Beginners are welcome. In the one-hour care program, clean the stable, prepare food, brush and take other care, and you can lead one of the horses in a short walk. This experience lets you fully interact with the horses with exhilarating fun.



## Horse Care Experience

- Duration: 1 Hour Fee: ¥3,000
- Other Experiences Include: Leading a Horse (5 min)—¥1,000; Horse Riding (10 min)—¥2,000

Note: Requires Reservations

## Kawanabe Horse Club

☎090. 2391. 1018 8152 Nosaki, Kawanabe-cho, Minamikyushu City  
Operation Hours 9:00am-11:30am, 1:00pm-3:30pm Close: Tuesday

MAP  
09  
ONSENRelaxing in an Onsen  
with Town View

This onsen is located on a hill overlooking the town of Kawanabe. This hot spring produces colorless, transparent, and smooth water with a slight scent of sulfur, which is popular for regulars. The open-air bath features a terrace where you can enjoy the cool breeze. Private bath with a room is recommended for families.

## Hot Springs Admission:

- 12 or Over—¥350;
- 6-11—¥150; 1-5—¥80
- Private Bath (90 min)—¥2,300



## Kawanabe K Onsen

☎0993. 56. 0754 4069 Nagata, Kawanabe-cho, Minamikyushu City  
10:00am-10:00pm Open Daily

MAP  
10  
FOODUnwind with a Cup of  
Mellow Chiran Tea

Founded in the town of tea, the teas in 'Chiran Farm' are grown organically without the use of chemical fertilizers or pesticides. At the shop, you can watch the millstone in action during the matcha grinding process and enjoy the mellow taste of freshly ground matcha. Be sure to try the matcha-dusted Chiran Matcha Soft Serve for ¥350.

## Popular Menus

- Chiran Matcha Soft Serve—¥350
- Summer-Limited Shaved Ice —¥450
- Winter-Limited Organic Chiran Matcha Set with Sweets —¥400



## Chiran Farm

☎0120. 650. 250 (Toll Free) 6219-3 Kori, Chiran-cho, Minamikyushu City  
10:00am-6:00pm Close: Wednesday (Except for Holidays)  
<https://www.chiran-nouen.co.jp/>





**Nansatsu Regional Promotion Bureau,  
Kagoshima Prefecture**  
General Affairs & Planning Dept./Div.

☎0993. 52. 1307

8-13 Kaseda-Higashihoncho, Minamisatsuma City,  
Kagoshima Prefecture  
8:30am-5:15pm Close: Weekends, Holidays

**Makurazaki City  
Tourism Association**

64 Matsunoo-cho, Makurazaki City  
☎0993. 76. 1668  
<https://makutabi.jp/>



**Ibusuki City  
Tourism Association**

2-5-33 Minato, Ibusuki City  
☎0993. 22. 3252  
<https://www.ibusuki.or.jp/>



**Minamisatsuma City  
Tourism Association**

34-2 Kaseda-Honcho, Minamisatsuma City  
☎0993. 53. 3751  
<https://kanko-minamisatsuma.jp/en/>



**Minamikyushu City  
Tourism Association**

6198-4 Kori, Chiran-cho, Minamikyushu City  
☎0993. 58. 7577  
<http://minamikyushu-kankounavi.com/>

