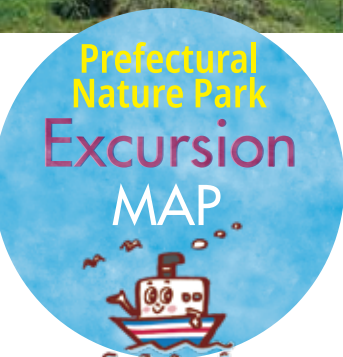




Takeshima

Iwojima

Kuroshima



Mishima



This map was completed with the cooperation of the people of Mishima Village. We hope you will enjoy their "personal sights" on the island.

Mishima Village, Kagoshima Prefecture

## Transport Information

### Transportation to the Port

Kagoshima Airport	Approx. 50 min by bus	Kagoshima Kinseicho bus stop	Approx. 15 min on foot	Kagoshima Main Port
Kagoshima-Chuo Sta.	Approx. 10 min by bus			



## HOW TO GET HERE

### Traveling from outside the prefecture

#### Flying (required time to Kagoshima Airport)

- Tokyo (Haneda) ..... Approx. 1 hr 50 min
- Chubu (Centrair) ..... Approx. 1 hr 15 min
- Osaka (Itami) ..... Approx. 1 hr 15 min
- Matsuyama ..... Approx. 1 hr
- Fukuoka ..... Approx. 55 min

#### Shinkansen (required time to Kagoshima-Chuo Sta.)

- Tokyo ..... Fastest 6 hrs 29 min
- Nagoya ..... Fastest 4 hrs 50 min
- Shin-Osaka ..... Fastest 3 hrs 41 min
- Hiroshima ..... Fastest 2 hrs 19 min
- Hakata ..... Fastest 1 hr 16 min
- Kumamoto ..... Fastest 42 min

#### Driving (required time to Kagoshima Main Port)

- From Dazaifu I.C. .... Approx. 3 hrs 40 min
- From Nagasaki I.C. .... Approx. 4 hrs 40 min
- From Saga-Yamato I.C. .... Approx. 3 hrs 40 min
- From Oita I.C. .... Approx. 4 hrs 30 min
- From Mashiki-Kumamoto ..... Approx. 2 hrs 30 min
- From Miyazaki I.C. .... Approx. 2 hrs

#### Village-Operated Ferry Mishima Timetable

\*The timetable is current as of March 2022

	Normal services		One-way day-trip services	
	Outbound	Inbound	Outbound	Inbound
Between Kagoshima and each island				
Kagoshima Port	Dep. 9:30	Arr. 14:05	Dep. 9:30	Arr. 19:50
Takeshima Port	Arr. 12:30 Dep. 12:45	Dep. 11:05 Arr. 10:50	Arr. 12:30 Dep. 12:45	
Iwojima Port	Arr. 13:25 Dep. 13:40	Dep. 10:10 Arr. 9:55	Arr. 13:25 Dep. 13:40	
Kuroshima Osato Port	Arr. 14:50 Dep. 15:05	Dep. 8:45 Arr. 8:30	Arr. 14:50 Dep. 15:05	
Kuroshima Katadomari Port	Dep. 15:35	Dep. 8:00	Dep. 15:35	Dep. 15:30

\*Traveling times are approximate.



The Mishima ferry schedule is available at the Mishima Village Hall and Ferry Mishima waiting area. It is also available on the Mishima Village's website at <http://mishimamura.com>.

\*Times are subject to change depending on the weather.

#### Cessna plane service (NJA) [Must be reserved]

There are scheduled flights from Kagoshima Airport to Iwojima Ferry Mishima waiting area. For details, please call New Japan Aviation (TEL: 0995-58-2211).

Mishima Village Hall ..... Phone: 099-222-3141

Mishima Village Tourism Information Center (Iwojima) ..... Phone: 09913-2-2370

Mishima Village website <http://mishimamura.com/>



Published by Kagoshima Prefecture Nature Conservation Division ☎099-286-2617 March 2022

m i s h i m a

## Mishima Village, Kagoshima Prefecture Mishima Prefectural Nature Park

Mishima Village, where Mishima Prefectural Nature Park is located, is in the northernmost part of the Southwest Islands. The islands consist of Takeshima and Iwojima, about 94 km south of the city of Kagoshima, and Kuroshima, Mishima, the uninhabited Showa Iwojima, and reefs about 50 km southwest of Bonomisaki Cape. Takeshima, Iwojima, and the surrounding reefs belong to the Miocene Ryukyu volcanic arc and form the north-western rim of the Kikai Caldera, which erupted 7,300 years ago. They exhibit topographic features that tell the story of how the Kikai Caldera formed. Kuroshima, along with Uji and Kusagaki islands, belongs to the old Ryukyu volcanic arc, where forests with unique flora are found.



## Takeshima



Takeshima Island

There are ruins from the Jomon period (ca 15,000–300 BCE) throughout the island, suggesting that people have lived here for over 3,000 years. Tourists and anglers regularly visit the island to enjoy the epic narratives of the Hijiri Daimyo Shrine, the Rokujizo (six Jizo statues) erected in hope for peace on the island, and a group of unique tombstones.

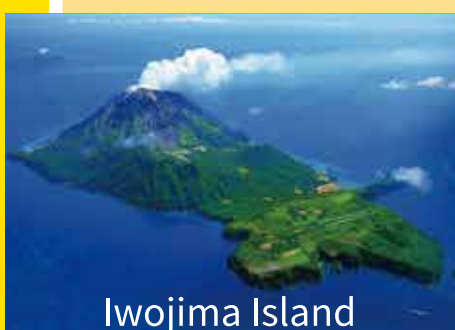


Relax and unwind in an island surrounded by bamboo groves.

With 'take' meaning bamboo in Japanese, the entire island is accordingly covered with Ryukyu (tootsik) bamboo. bamboo. Most of the island's black soil farmlands are planted with grass, and cows graze peacefully in the pasture stretching across the gently undulating hills. Nearly all coastlines are cliffs, and the sea surrounding the island is a clear marine blue. If you look in, you will see schools of colorful tropical fish swimming in the water, making the sea perfect for fishing and diving.

The island has a cir. of 12.8 km.

## Iwojima



Iwojima Island

An island overflowing with the energy of an active volcano steeped in the history of the Heike clan.

Iwojima, in the center of the three islands and home to the white-steam-billowing Mt. Iwo, is an island filled with the energy of an active volcano and majesty of nature. One of the submarine volcanoes that erupted along the Kirishima Volcanic Belt, Iwojima, is located on the outer rim of the Kikai Caldera. Its coastline stained in various colors by mineral-dissolving groundwater has a mysterious aura. The rustic open-air baths on the shore, with ceaselessly gushing hot spring water, are also a gift from the volcano.



Kikaigashima, where Shunkan (a Japanese monk and historical figure) was once exiled, is thought to be Iwojima, and there are many historical sites associated with him. In 1996, the first Kabuki performance of Shunkan was presented by Nakamura Kankuro at the historical site. The island is also believed to be where Emperor Antoku had perished at the sea of Dan-no-Ura, and there are many historical sites and documents associated with the legend.

## Kuroshima



Kuroshima Island

An island of deep verdant forests that nurtures a variety of flora and fauna.

The largest of the three islands has two hamlets called Osato and Katadomari. It is richer in vegetation and fauna than the other islands, and various migratory birds and insects can be found in its diverse natural habitat. Freshwater gushing from the forests forms a waterfall on the coastal cliff, giving Shirataki Falls a fine appearance. Many excellent fishing spots are scattered around the island with numerous jutting rocky shores, attracting anglers from both in and out of the island.



With its lush environment, the island is blessed with products such as Kuroshima mandarins. The vast land is used for cattle grazing, and a lot of effort is put into raising cattle with sturdy loins. The scenic Sunset Line, where oddly-shaped rocks and cliffs can be seen along the coastline, is breath-taking at sunset.

Life Nurtured by Nature  
A Tale of Three Islands

Students from the islands paid a visit.

Mishima Takeshima Gakuen (Takeshima)

Entire families worked together to catch flying fish



Mishima Iwojima Gakuen (Iwojima)

Living with Iwojima



Mishima Osato Gakuen (Kuroshima)

Mandarins passed down the generations in Kuroshima



Mishima Katadomari Gakuen (Kuroshima)

Bamboo crafts support people's lives



The area around Mishima Prefectural Nature Park is blessed with soothing scenery and unspoiled nature. There are stories of the islanders who have made good use of their surroundings over the years. Island students visited experts, who have passed on their wisdom and skills in various fields, such as farming, fishing, and mining, to hear their stories.



●See the AR movies of the initiatives taken in 2022.  
●Scan the QR code above to read the E-book.

\*The codes for the AR movies and E-book will connect to external websites for viewing.

## Mishima Events

### Mishima Village Festivals and Events

#### Takeshima

February 3: Setsubun (The traditional end of winter) Ceremony to drive away evil spirits  
August 13: Bon Dance  
August 15, 15th day of the lunar month: The fifteenth night  
September 8: Yoimiya Festival, September Festival.

#### Iwojima

January 7: Toidon-no-Karaidon (Kusembo) Ceremony to drive away evil spirits  
Late April: Port Festival  
May 5: Annual Festival  
End of July: Mishima Cup Yacht Race  
August 15: Hashitamatsu Fire Festival  
August 1 & 2, 1st and 2nd days of the lunar month: Hassaku Drum Dance  
September 10 & 11, 10th and 11th days of the lunar month: September Dance  
Mid-December through February: Blooming of camellia blossoms

#### Kuroshima

January 7: Ceremony to drive away evil spirits  
February 10: Ancestral Festival  
Early May: Kuroshima Tokko Heiwa Kinensai: a ceremony to commemorate and pray for the islands' Special Attack Units  
June 23, 23rd day of June of the old lunar month: Ibadon  
August 15: Bon Dance  
September 1: Hassaku Dance  
November: Hi-no-Kami (god of fire) Festival  
November 11: Ancestral Festival

### Scan to see the movies!

- 1 Download the AR app COCOROAR (free)
- 2 Scan the symbol
- 3 Start watching the movies!

\*Depending on your device model or communication environment, the movies may not be viewable.

Download the app here

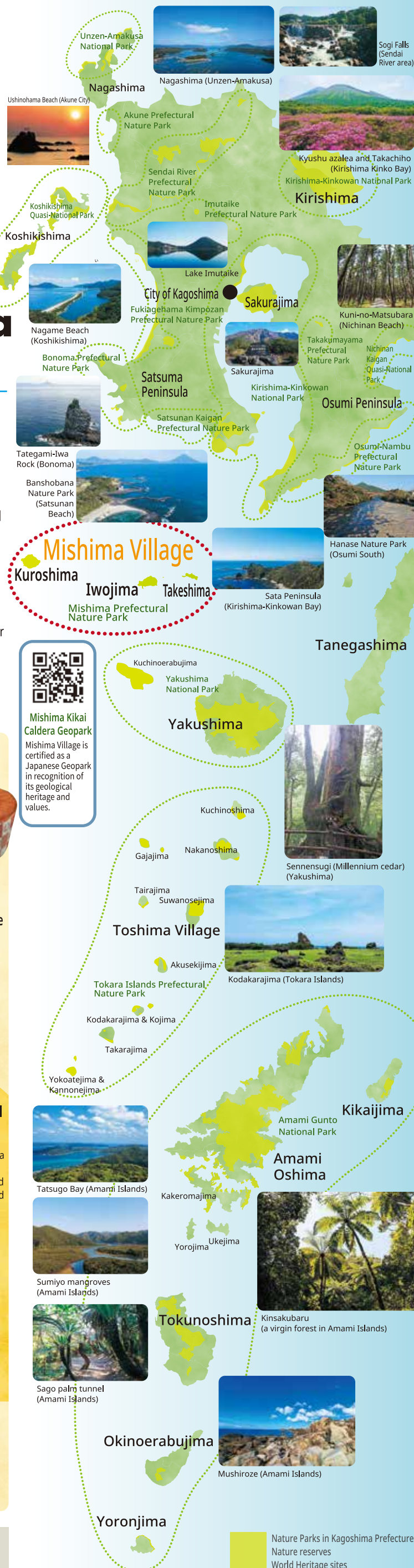


## Ferry MISHIMA

## Enjoy the Mishima Ferry

Ferry Mishima, the only transportation service in Mishima Village that departs from Kagoshima Port and travels to the three islands, serves to transport people and daily commodities and enables visitors to enjoy active volcanoes representing Japan and prehistoric landforms. It offers the appeal of sailing through the world-famous three large calderas (Aira, Ata, Kikai) with a view of their interiors. As such, it would be a shame if you do not enjoy Kagoshima's geology with your own eyes when you ride the ferry.

Visit Kagoshima Prefecture's national parks, quasi-national parks, and nature parks to enjoy the great outdoors



### Shochu Mishimamura & Shochu Mendon

The luscious aroma of the sweet potato "Beni-Otome" produced in Mishima Village's Iwojima and Kuroshima and the exquisite water of Kuroshima make these shochus rare and limited productions.



Mishima Village Daimyo Bamboo website



### Daimyo bamboo

Also known as the king of bamboo shoots, daimyo bamboo shoots are characterized by their rich flavor and crunchy texture. Scan the QR code to visit the dedicated website for information on when they are available and how to cook them.



Daimyo Bamboo Shoot Rice Mix

Also available at Mishima Village Tourism Association's official store. Contact the Mishima Village Tourism Association for details.

Mishima Village Tourism Association ☎099-222-3141

### Hamagi Gyoza (Hamagi = coastal hog fennel)

Students of Takeshima Gakuen make delicious gyoza with coastal hog fennels growing wild on the island. Even the label of this special product is designed by the students. Since sales are limited, contact the Mishima Village Office for details.

Mishima Tsubaki Udon

Mishima Village's Food & Gifts

Warm and hearty, choice products from Mishima. Rustic, but infused with the heart of the island.

Camellia Oil

Domestically produced additive-free camellia oil has long been used for cooking and moisturizing hair and skin. High-quality oil is used to produce various processed products.

Camellia Shampoo & Conditioner

Camellia Soap

Mishima Village Tourism Association online shop

Sells Mishima Village specialties and merchandise.

Mishima Shochu Muku-no-Kura online shop

Sells the distillery's shochu.

Information on Accommodations in Mishima Village

There are no convenience stores or restaurants in Mishima Village, so we recommend staying at an inn. Visitors are also advised to make a reservation before they arrive at the village, as they may not be accommodated on the day of their visit. Scan the QR code on the right for information about each mishuku inn.

Nature Parks in Kagoshima Prefecture Nature reserves World Heritage sites



